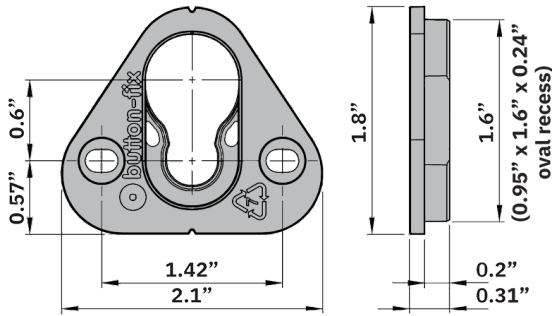
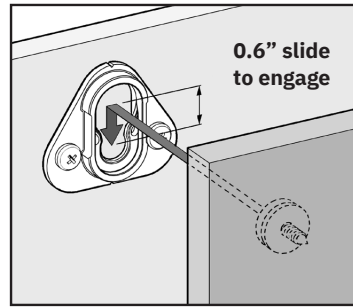


Type 1

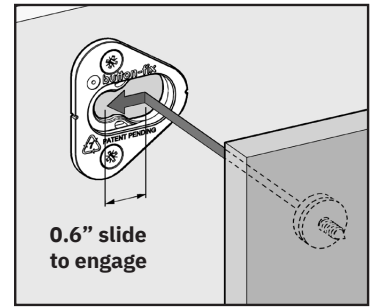
262.94.000 / 262.94.010 (with Button)



Material = **Nylon PA6, 30% glass filled** (for strength)
Wall panel with 4 x Fixes, guide load = **440 lbs** max. (1)
Ceiling panel with 4 x Fixes, guide load = **250 lbs** max. (2)



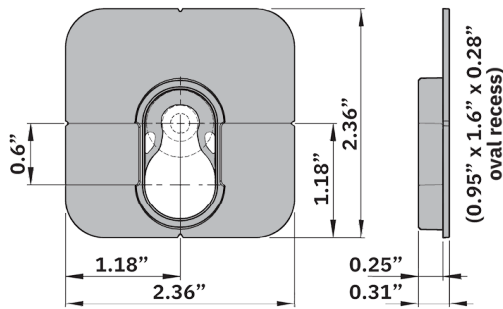
Surface-mounted installation
Orientated for downwards assembly
Panel gap = **0.33"**
Screws = **#10 pan head**



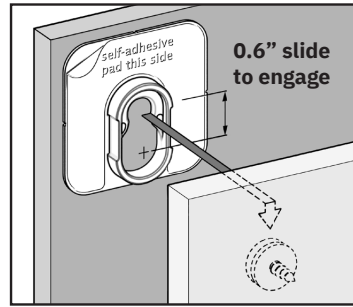
Semi-recessed installation
Orientated for sideways assembly
Panel gap = **0.12"**
Screws = **#8 or #9 flat head**

Type 1 Bonded

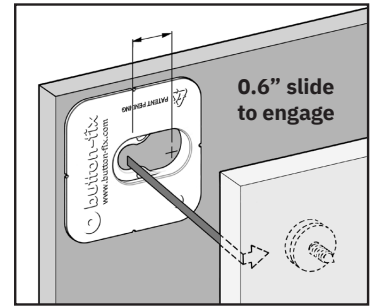
262.94.012 / 262.94.013 (with Button)



Material = **ABS** (for compatibility with many adhesives)
Wall panel with 4 x Fixes, guide load = **160 lbs** max. (3)
Ceiling panel with 4 x Fixes, guide load = **160 lbs** max. (3)
Self-adhesive Fix-pads available for light-duty applications



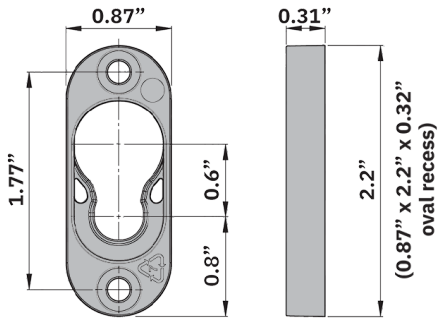
Surface-mounted installation
Orientated for downwards assembly
Panel gap = **0.33"** approx.
Max. load (Fix-pad) = **4.4 lbs** per Fix



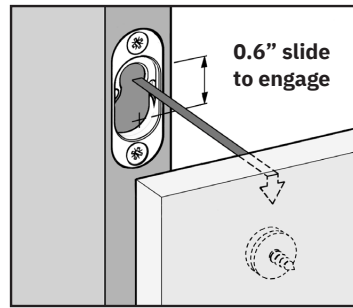
Semi-recessed installation
Orientated for sideways assembly
Panel gap = **0.08"** approx.
Max. load (Fix-pad) = **44 lbs** per Fix

Type 1 Flush

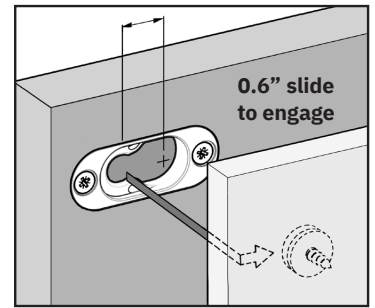
262.94.014 / 262.94.015 (with Button)



Material = **Nylon PA6, 30% glass filled** (for strength)
Wall panel with 4 x Fixes, guide load = **220 lbs** max. (1)
Ceiling panel with 4 x Fixes, guide load = **220 lbs** max. (based on a surface-mounted installation)(4)



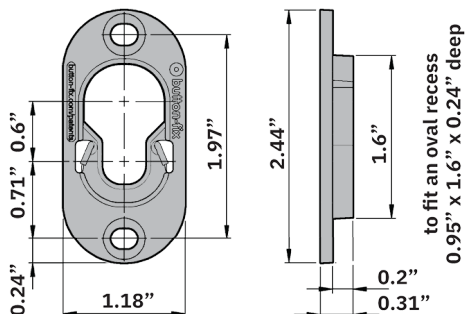
Recessed into the **edge** of a panel
Orientated for downwards assembly
Minimum panel thickness = **1.1"**
Screws = **#8 or #9 flat head**



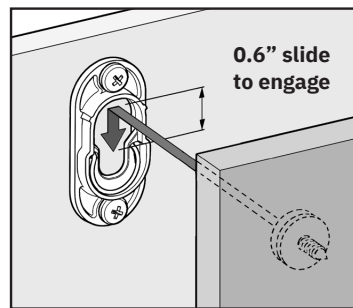
Recessed into the **face** of a panel
Orientated for sideways assembly
Minimum panel thickness = **0.75"**
Screws = **#8 or #9 flat head**

Type 1 Metal

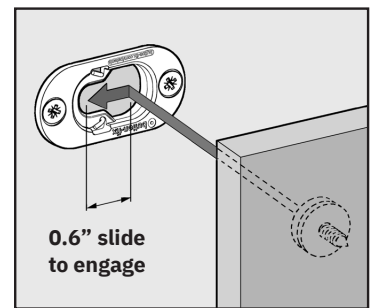
262.94.019 (complete set with Button)



Material = **ZL2 zinc alloy + 316 stainless-steel spring**
Wall panel with 4 x Fixes, guide load = **770 lbs** max. (1)
Ceiling panel with 4 x Fixes, guide load = **500 lbs** max. (2)
Matching zinc Button same dimensions as Type 1 Button



Surface-mounted installation
Orientated for downwards assembly
Panel gap = **0.33"**
Screws = **#10 pan head**

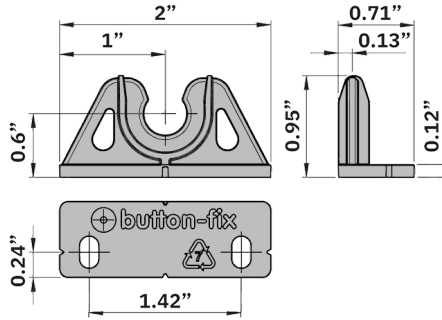


Semi-recessed installation
Orientated for sideways assembly
Panel gap = **0.12"**
Screws = **#10 flat head**

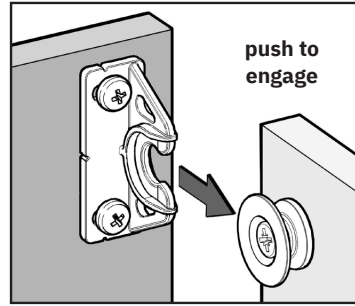
Technical information: dimensions, materials & guide loads

Type 2

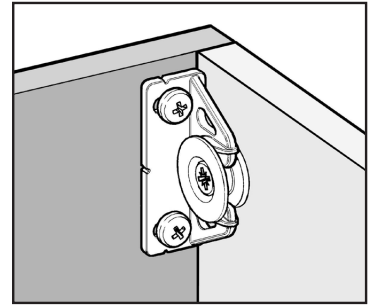
262.94.001 / 262.94.024 (with Button)



Material = **DuPont Zytel® nylon 66** (for durability)
Wall panel with 4 x Fixes, guide load = **110 lbs** max. (1)
Never use Type 2 on ceiling panels
Disengagement force (for a single Fix) = **15 lbs**

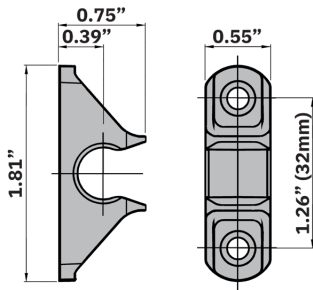


Push on/pull off engagement
90° connection to a frame or cabinet side panel
Screws = **#8 or #9 pan head**

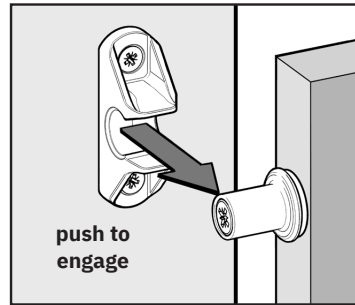


Type 2 COMPACT push-on

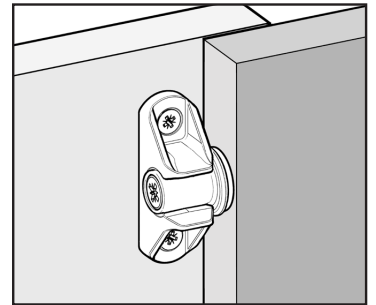
171.040.1 / 171.040.1.1 (with Button)



Material = **Acetal** (for durability)
Wall panel with 4 x Fixes, guide load = **132 lbs** max. (1)
Never use Type 2 on ceiling panels
Disengagement force (for a single Fix) = **44 lbs**

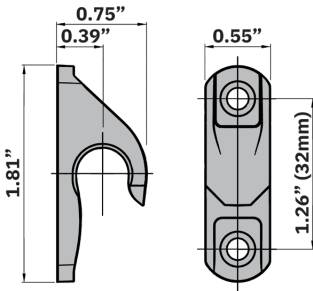


Push on/pull off engagement
90° connection to a frame, cabinet side panel or overlapping panel
Screws = **#8 or #9 flat head**

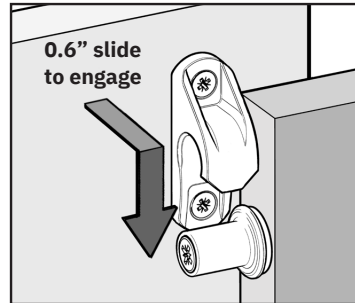


Type 2 COMPACT drop-down

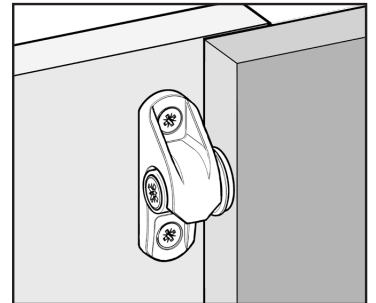
171.040.2 / 171.040.2.1 (with Button)



Material = **Nylon PA6, 30% glass filled** (for strength)
Wall panel with 4 x Fixes, guide load = **265 lbs** max. (1)
Ceiling panel with 4 x Fixes, guide load = **44 lbs** max. (2)

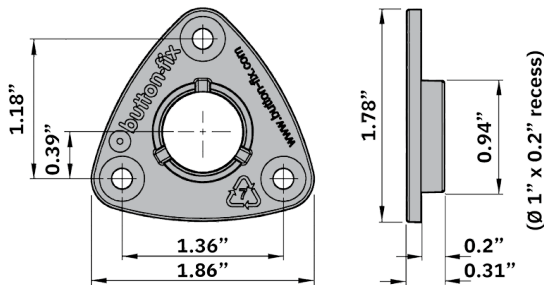


Drop-down engagement
90° connection to a frame, cabinet side panel or overlapping panel
Screws = **#8 or #9 flat head**

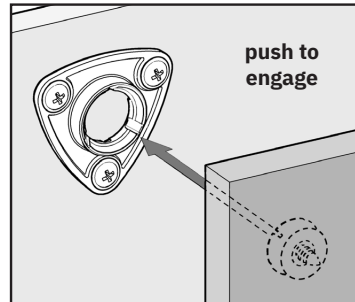


Type 3

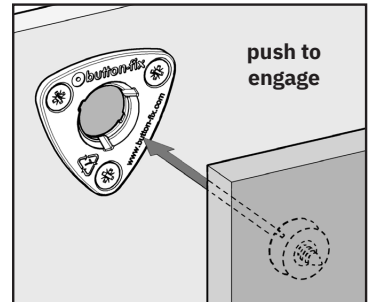
262.94.050 (complete set with Button)



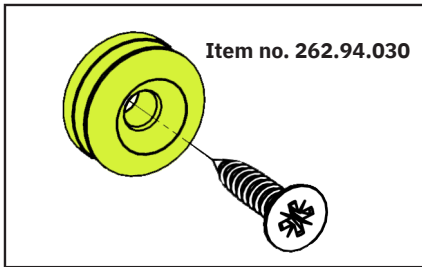
Material = **PBT** (for strength and durability)
Wall panel with 4 x Fixes, guide load = **132 lbs** max. (1)
Ceiling panel with 4 x Fixes, guide load = **22 lbs** max. (5)
Disengagement force (for a single Fix) = **30 lbs**



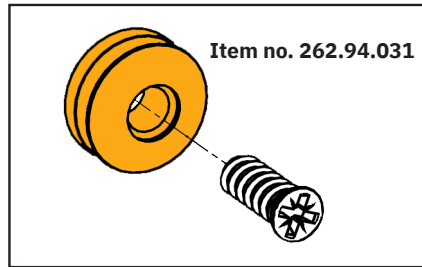
Surface-mounted installation
Push on/pull off engagement
Panel gap = **0.33"**
Screws = **#8 pan head**



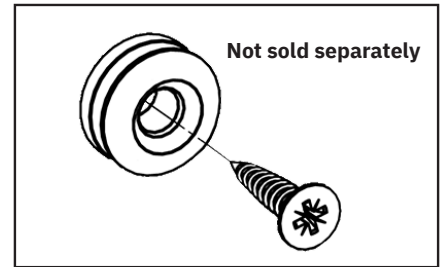
Semi-recessed installation
Push on/pull off engagement
Panel gap = **0.12"**
Screws = **#8 or #9 flat head**



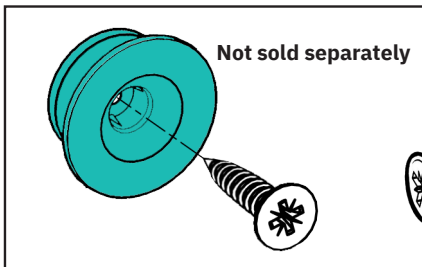
Lime green Type 1 Button for wood screws
Material = **Nylon PA6, 30% glass filled**
Dimensions = $\varnothing 0.71'' \times 0.32''$
Screws = **#10 flat head**



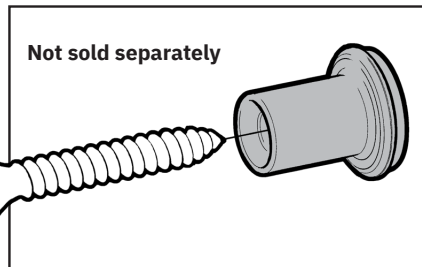
Orange Type 1 Button for Euro screws
Material = **Nylon PA6, 30% glass filled**
Dimensions = $\varnothing 0.71'' \times 0.32''$
Screws = **$\varnothing 6.2\text{mm}$ Varianta 5** (to fit $\varnothing 5\text{mm}$ pilot hole)



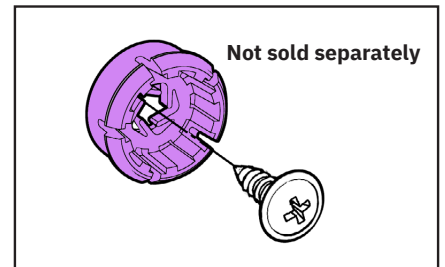
Type 1 Metal Button
Material = **ZL2 zinc alloy**
Dimensions = $\varnothing 0.71'' \times 0.32''$
Screws = **#10 flat head or $\varnothing 6.2\text{mm}$ Varianta 5** (to fit $\varnothing 5\text{mm}$ pilot hole)



Type 2 Button
Material = **Nylon PA6**
Dimensions = $\varnothing 0.93'' \times 0.38''$
Screws = **#10 flat head or $\varnothing 6.2\text{mm}$ Varianta 5** (to fit $\varnothing 5\text{mm}$ pilot hole)



Type 2 COMPACT Button
Material = **Nylon PA6, 30% glass filled**
Dimensions = $\varnothing 0.69'' \times 0.75''$
Screws = **#10 flat head** at least 1.375" long



Type 3 Button
Material = **Acetal**
Dimensions = $\varnothing 0.74'' \times 0.33''$
Screws = **#8 or #10 round washer head**

(1) Advice on panel loads is given with the proviso that the screws and substrate are properly matched, and all other instructions complied with. For critical applications it is essential to perform your own tests.

(2) Advice is based on independent load tests with Button-fix attached to 0.75" MDF or plywood. Allowances should be made when using different panels. Independent test reports can be found on our website: button-fix.com/technical-resources

(3) For Type 1 Bonded, always follow the adhesive manufacturer's recommendations on substrate suitability, preparations and loadings, and perform your own tests as necessary.

(4) When using Type 1 Flush recessed into a ceiling panel, allowances should be made for the shorter effective length of the screws and their reduced pull-out strength.

(5) The guide load for using Type 3 on ceiling panels should be applied to any panel that is not vertical and its weight acts to disengage the Button-fix.

All Button-fix products are made in the UK
Any questions? Email technical@button-fix.com