

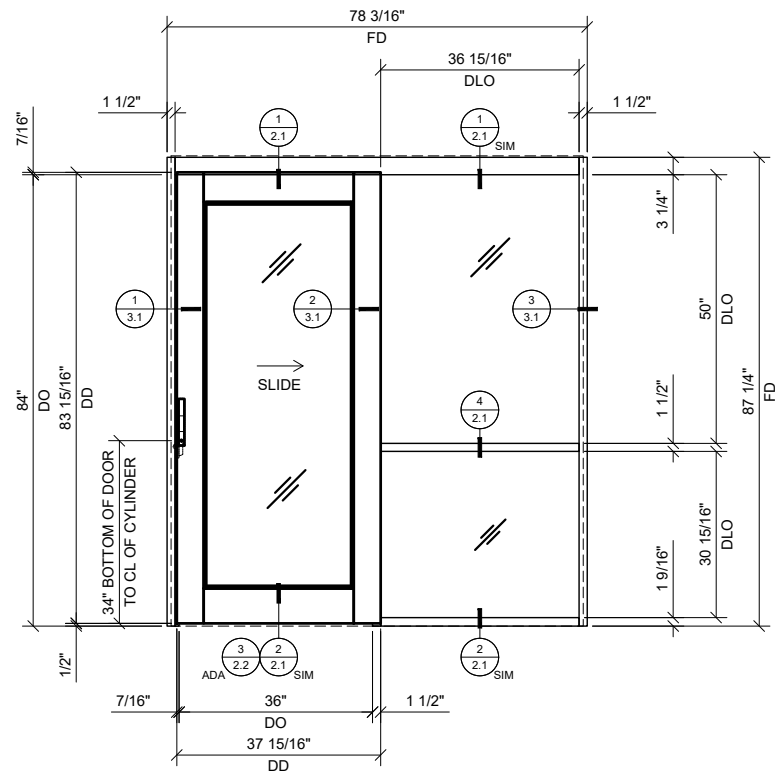
- SYSTEM DESIGNED TO BE SURFACE MOUNTED UNDER 4-7/8" (124 MM) WALLS
- DESIGNED FOR TOP LOAD GASKETS
- 1-1/2" (38.1 MM) FACE TRIM
- SCREW SPLINE OR CLIP JOINERY
- STANDARD FINISHES
CLEAR, BLACK BRONZE ANODIZE
- COMPLETE SINGLE AND DOUBLE DOOR KITS AVAILABLE IN SIX CONFIGURATIONS
- AVAILABLE FOR 1/4", 3/8", 1/2", AND 9/16" (6, 10, 12, AND 14 MM) GLAZING
- U.S. ALUMINUM DOORS, GLASS DOORS ARE AVAILABLE
- OPTIONAL DOOR HARDWARE:
- CUSTOM PAINT FINISHES UPON REQUEST

CRL-US ALUMINUM SERIES 487 OFFICE PARTITION SYSTEM IS COMPATIBLE WITH MOST GLASS USED FOR INTERIOR APPLICATIONS

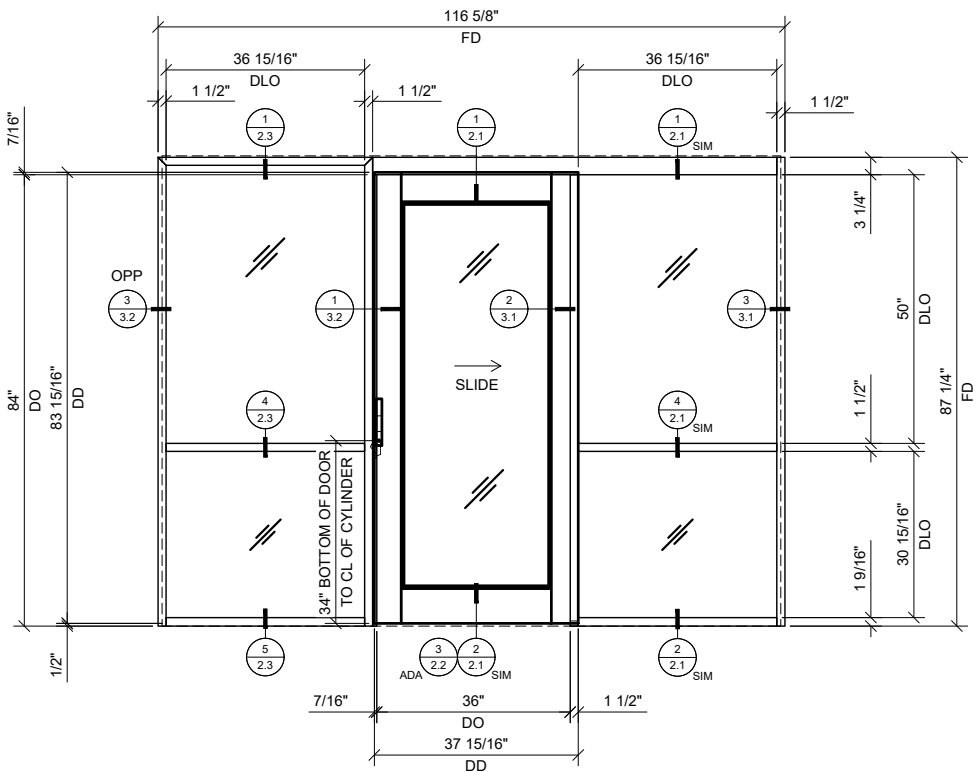
USE THE FOLLOWING GASKET CHART FOR DIFFERENT GLASS THICKNESS:

- 1/4" (6MM) GLASS - USE GASKETS NP225 + NP225 AVAILABLE IN VINYL AND SILICONE
- 3/8" (10MM) GLASS - USE GASKETS NP238 + NP238
- 1/2" (12MM) GLASS - USE GASKETS NP238 + NP563
- 9/16" (14MM) GLASS - USE GASKETS NP563 + NP563

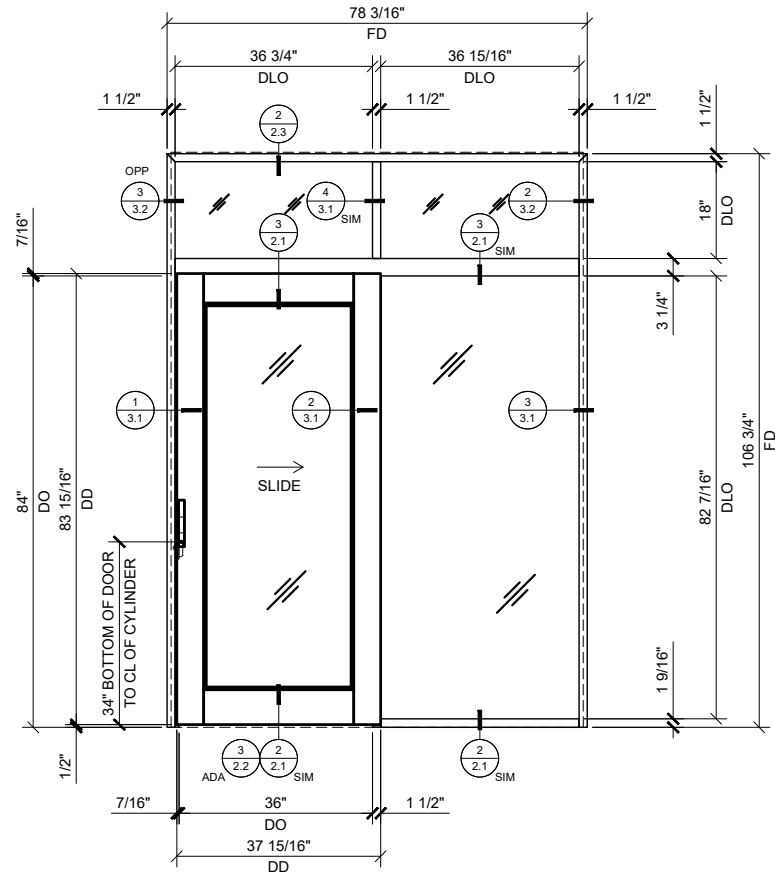
STANDARD ABBREVIATIONS
RO = ROUGH OPENING
FD = FRAME DIMENSION
DLO = DAYLITE OPENING
DO = DOOR OPENING
DD = DOOR DIMENSION



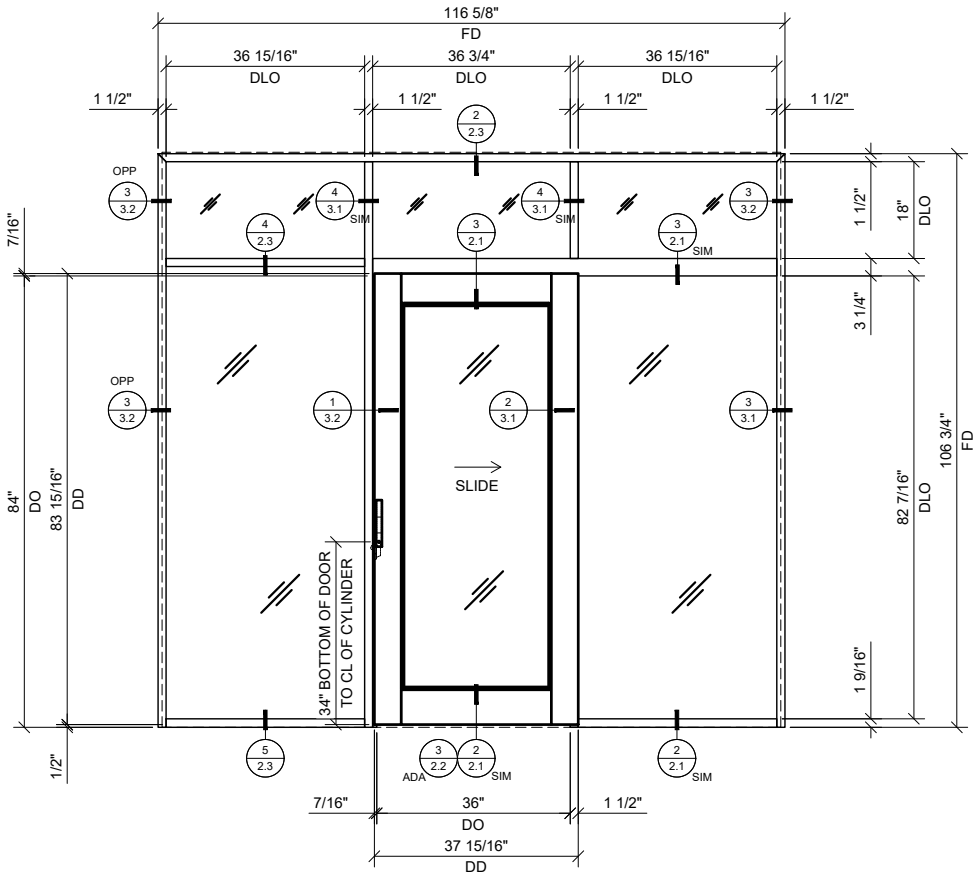
1 SINGLE SLIDER WITH BAY
3/4" = 1'-0" ARCH. REF.: N/A



3 SINGLE SLIDER WITH BAY & SIDELITE
3/4" = 1'-0" ARCH. REF.: N/A



2 SINGLE SLIDER WITH BAY & TRANSOM
3/4" = 1'-0" ARCH. REF.: N/A



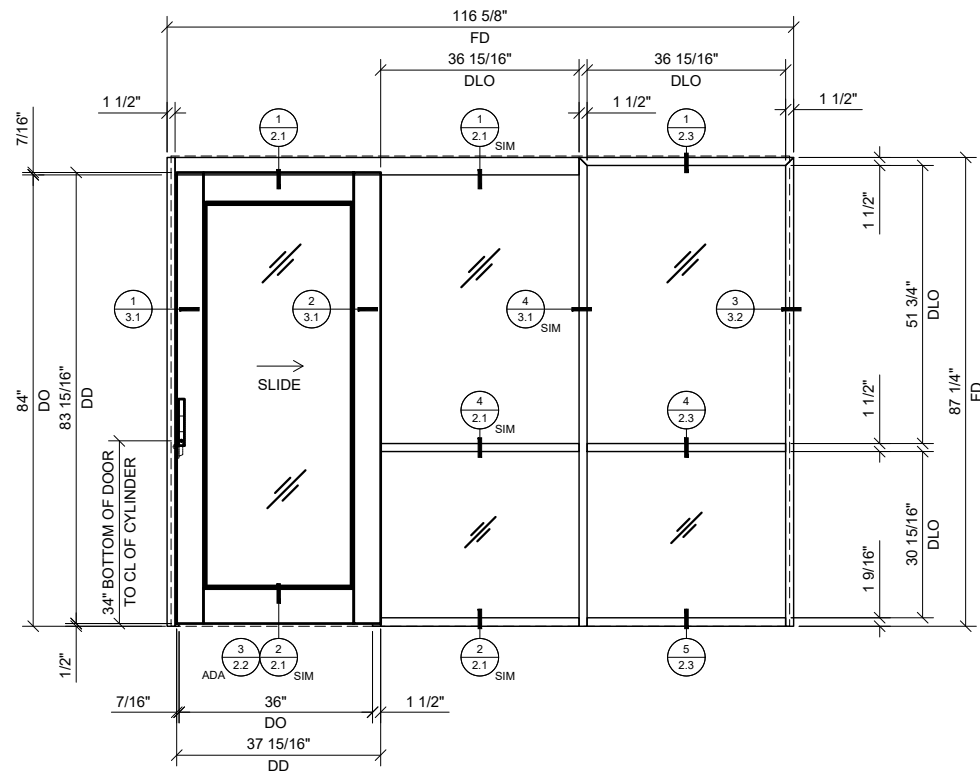
4 SINGLE SLIDER WITH BAY, TRANSOM & SIDELITE
3/4" = 1'-0" ARCH. REF.: N/A

Description:
CRL 487
RAIL & STILE WIDE
STILE SLIDER

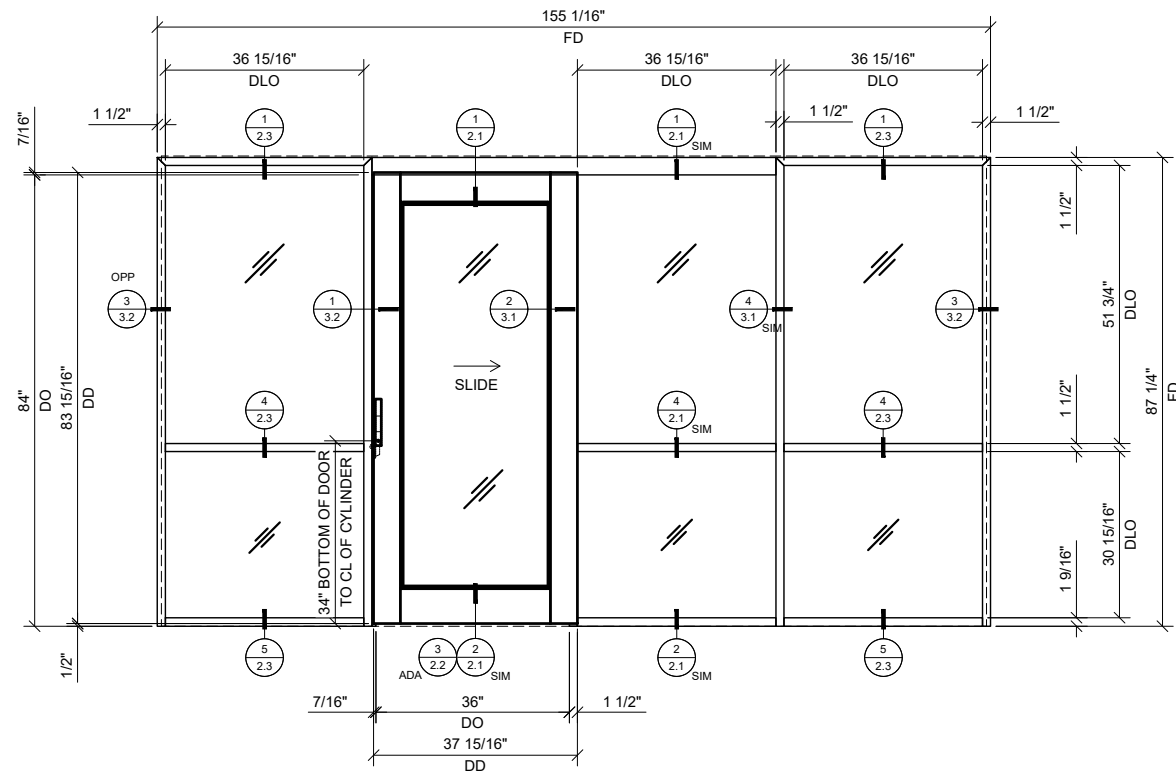
Drawn By:RPD
Date: 01/23/20
Scale: AS NOTED
File Name: CRL_487_1.5IN_SLIDER_OPS.dwg

Sheet

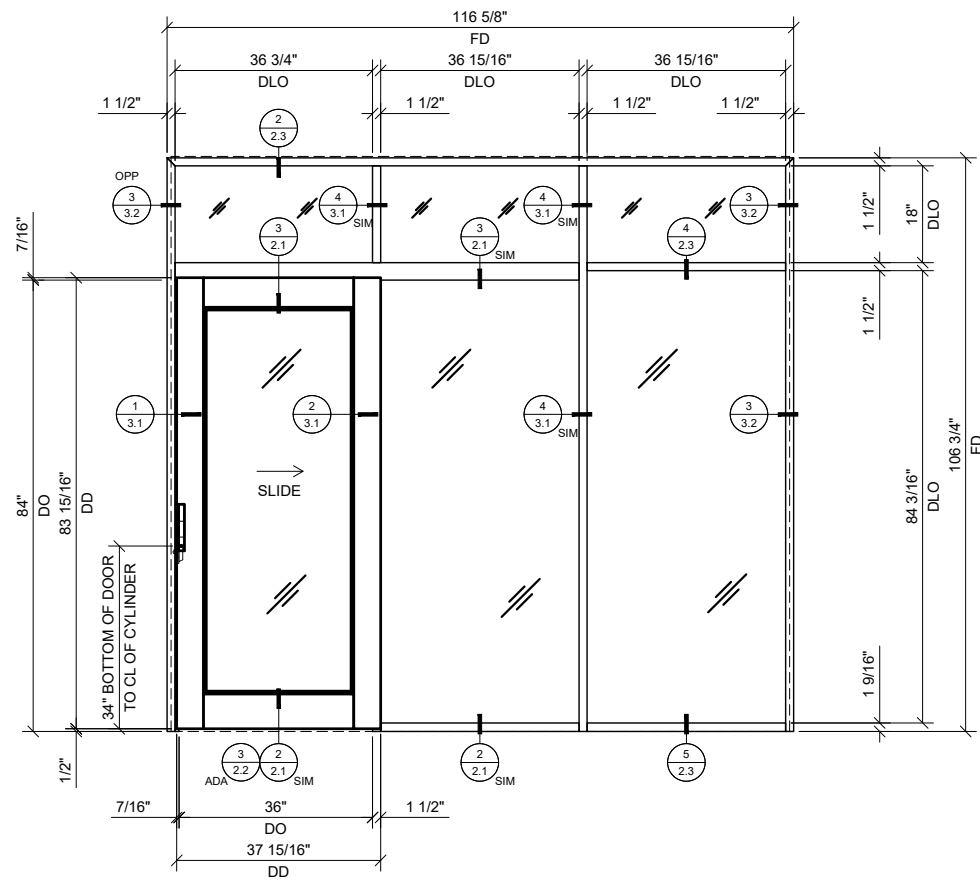
1.2



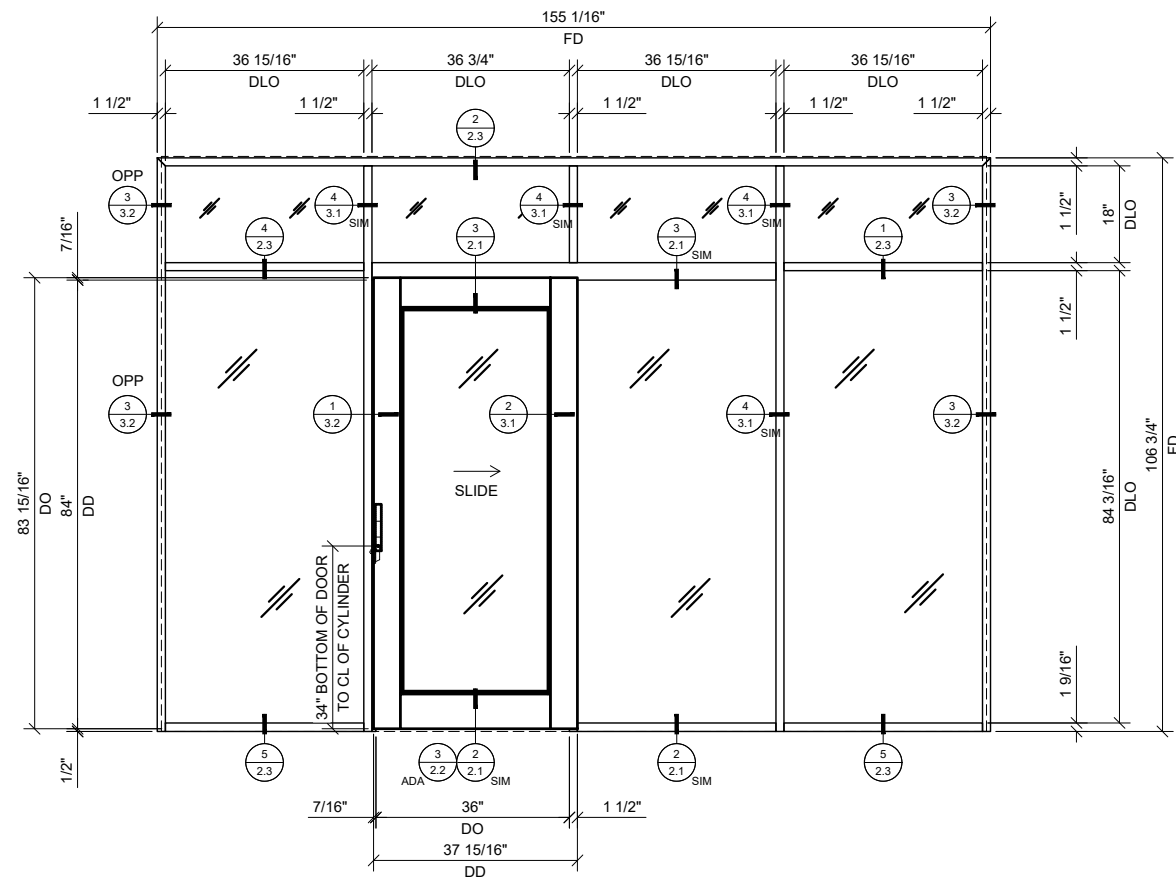
1 SINGLE SLIDER WITH BAY & SIDELITE
3/4"=1'-0" ARCH REF: N/A



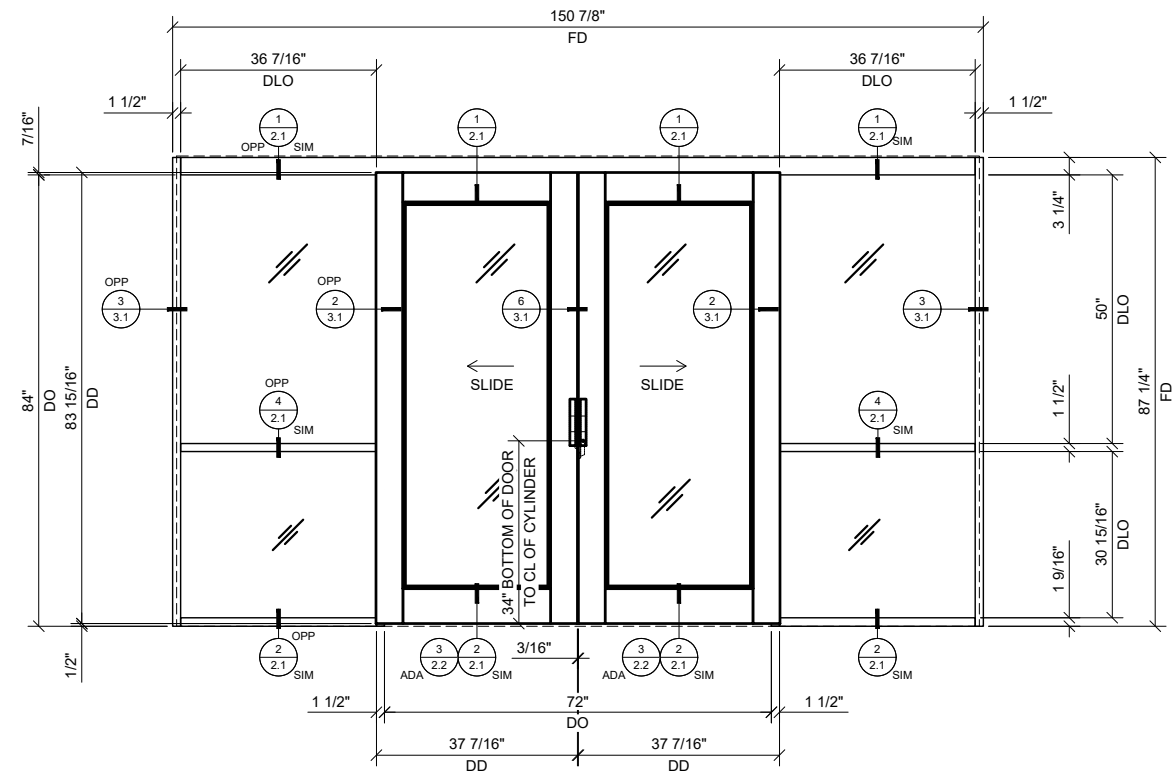
3 SINGLE SLIDER WITH BAY & SIDELITE AT BOTH ENDS
3/4"=1'-0" ARCH REF: N/A



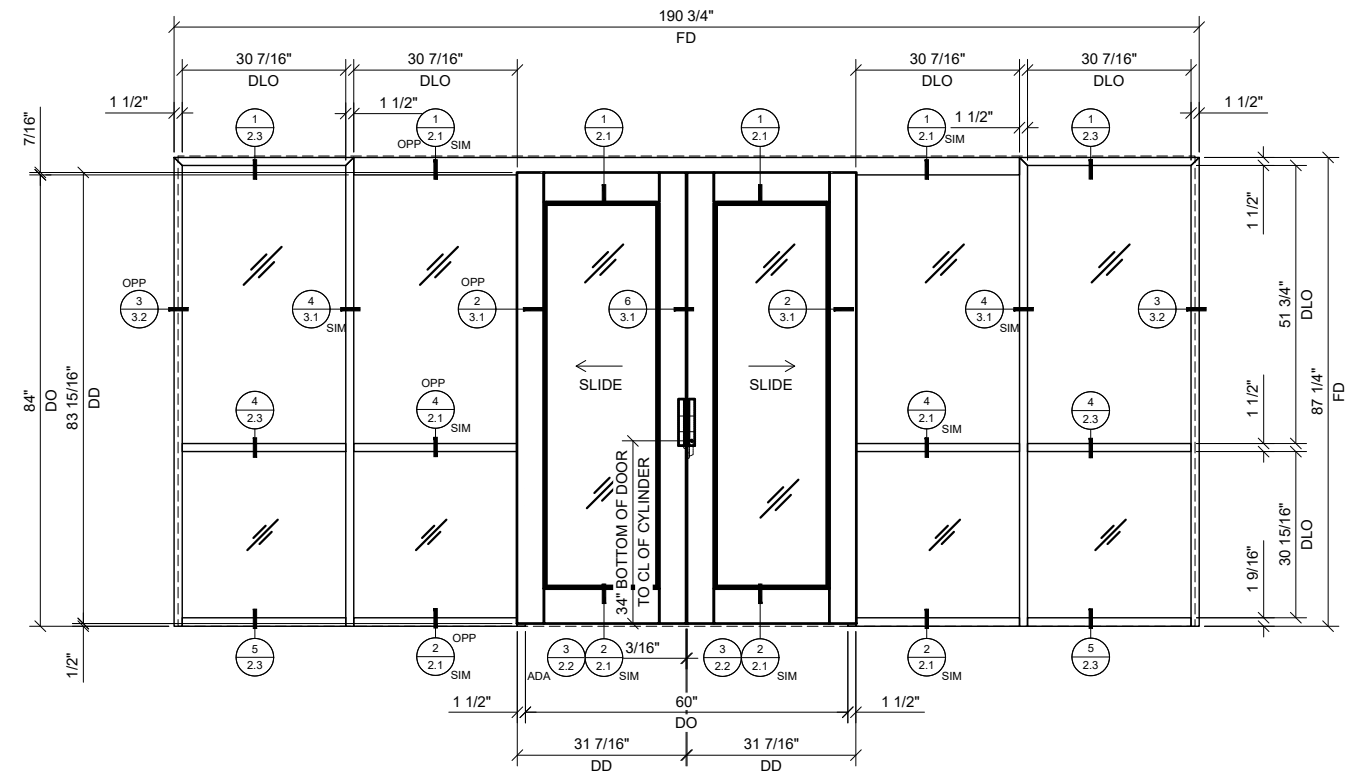
2 SINGLE SLIDER WITH BAY, TRANSOM & SIDELITE
3/4"=1'-0" ARCH REF: N/A



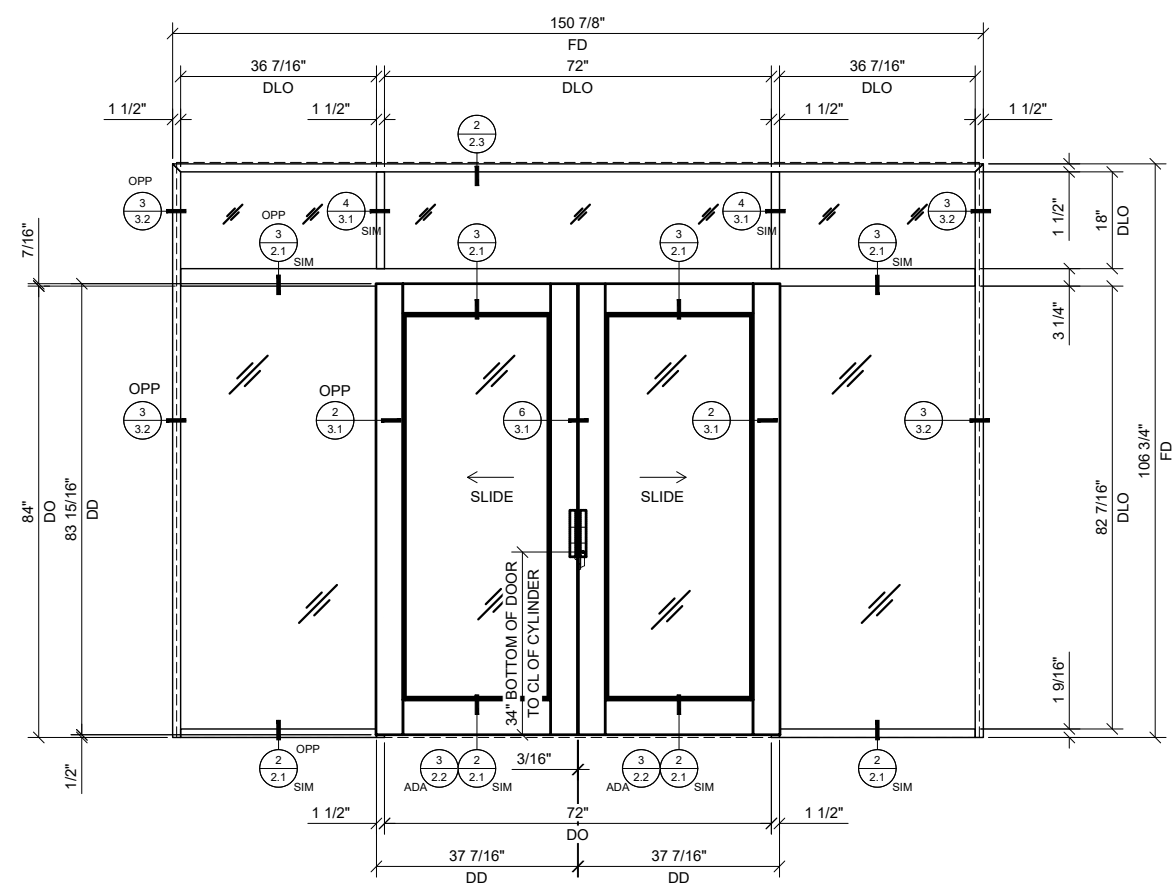
4 SINGLE SLIDER WITH BAY, TRANSOM & SIDELITE AT EACH END
3/4"=1'-0" ARCH REF: N/A



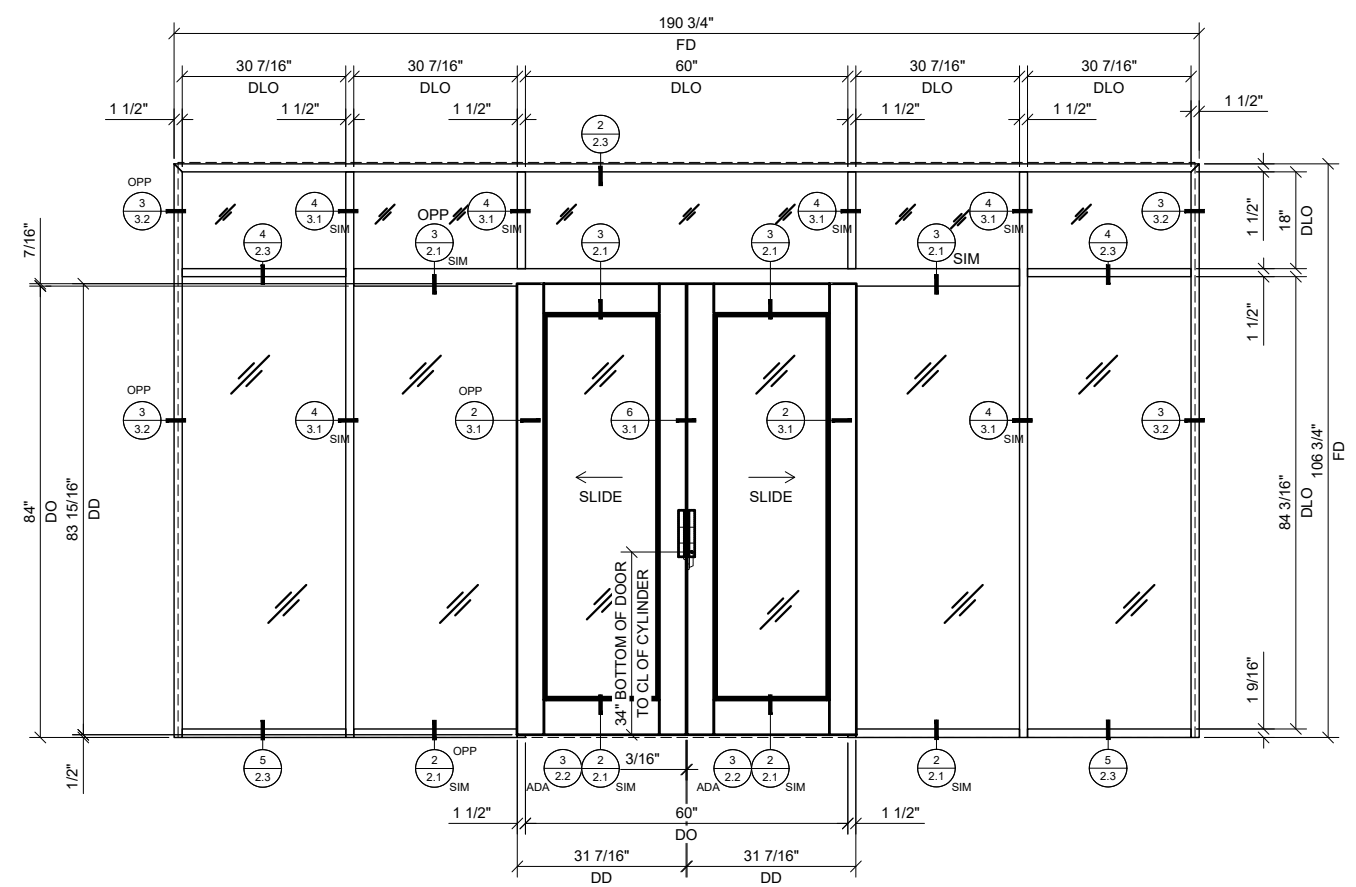
① BI-PART SLIDER WITH BAYS
3/4"=1'-0" ARCH REF: N/A



③ BI-PART SLIDER WITH BAY & SIDELITES AT EACH END
3/4"=1'-0" ARCH REF: N/A



② BI-PART SLIDER WITH BAYS & TRANSOM
3/4"=1'-0" ARCH REF: N/A



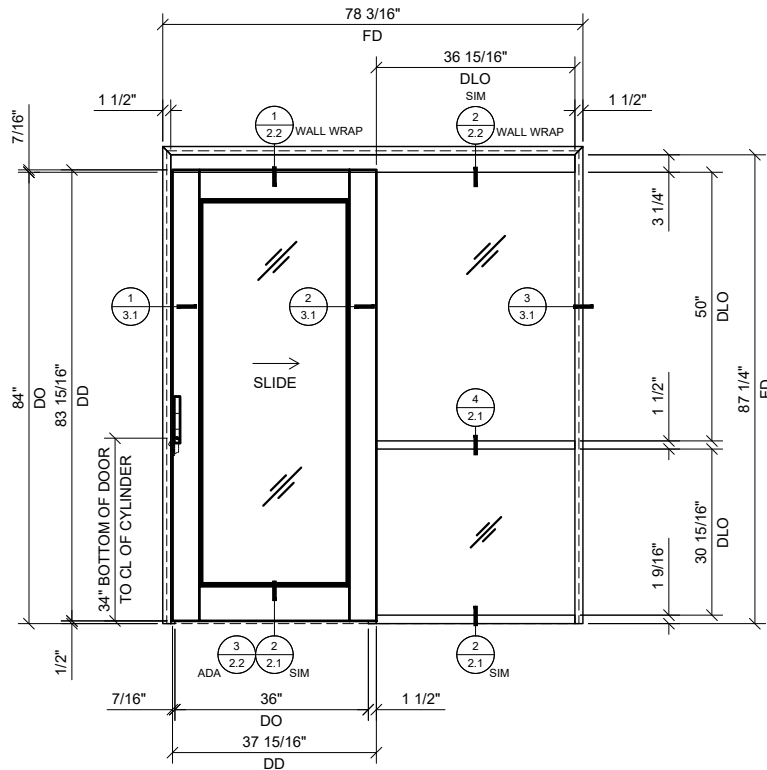
④ BI-PART SLIDER WITH BAY, TRANSOM & SIDELITES AT EACH END
3/4"=1'-0" ARCH REF: N/A

Revisions By:

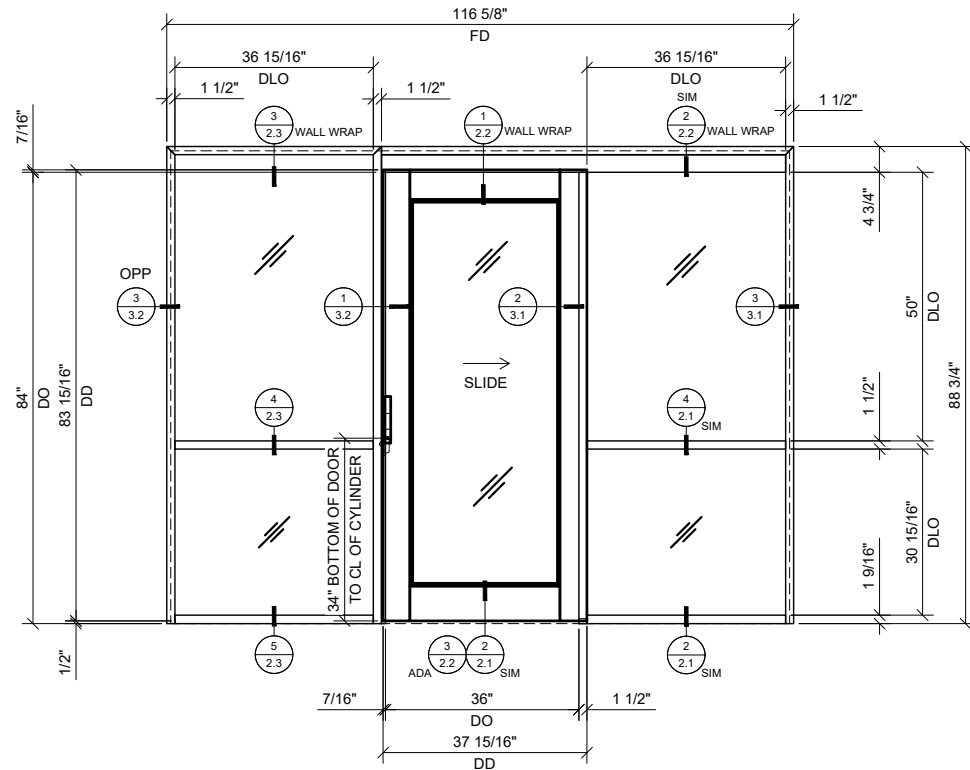
CRL
2503 E. Venice Avenue, Los Angeles, CA 90059-1897
PH: (800)-421-6144 FX: 800-587-7501 www.crlusa.com

Description:
CRL 487
RAIL & STILE WIDE
STILE SLIDER

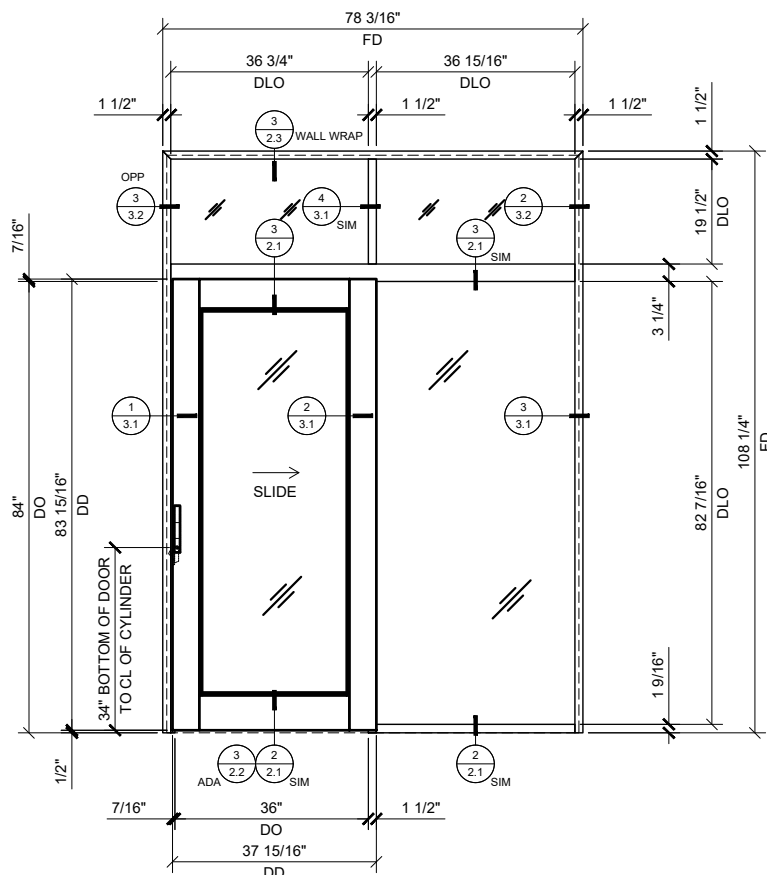
Drawn By: RPD
Date: 01/23/20
Scale: AS NOTED
File Name: CRL_487_1.5IN_SLIDER_OPS.dwg



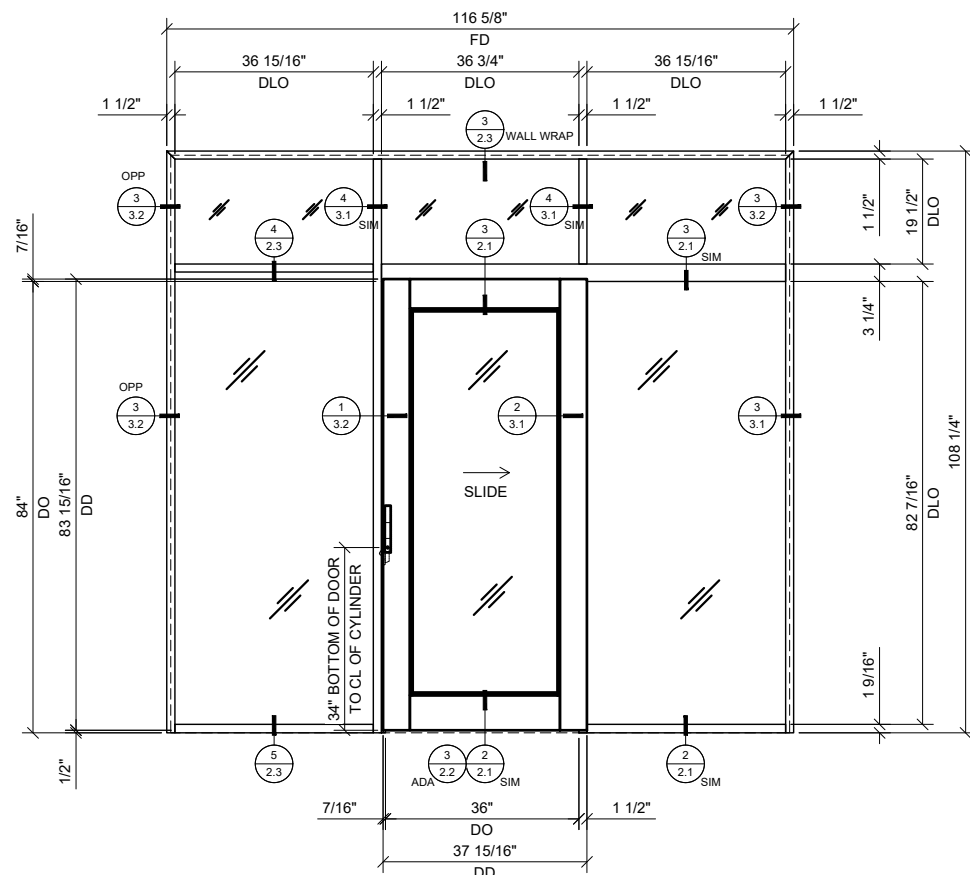
1 SINGLE SLIDER WITH BAY
3/4" = 1'-0" ARCH. REF.: N/A



3 SINGLE SLIDER WITH BAY & SIDELITE
3/4" = 1'-0" ARCH. REF.: N/A



2 SINGLE SLIDER WITH BAY & TRANSOM
3/4" = 1'-0" ARCH. REF.: N/A



4 SINGLE SLIDER WITH BAY, TRANSOM & SIDELITE
3/4" = 1'-0" ARCH. REF.: N/A

· SYSTEM DESIGNED TO WRAP 4-7/8" (124 MM) WALLS

· DESIGNED FOR TOP LOAD GASKETS

· 1-1/2" (38.1 MM) FACE TRIM

· SCREW SPLINE OR CLIP JOINERY

· STANDARD FINISHES
CLEAR, BLACK BRONZE ANODIZE

· COMPLETE SINGLE AND DOUBLE DOOR KITS
AVAILABLE IN SIX CONFIGURATIONS

· AVAILABLE FOR 1/4", 3/8", 1/2", AND 9/16"
(6, 10, 12, AND 14 MM) GLAZING

· U.S. ALUMINUM DOORS, GLASS DOORS ARE
AVAILABLE

· OPTIONAL DOOR HARDWARE:

· CUSTOM PAINT FINISHES UPON REQUEST

CRL-US ALUMINUM SERIES 487 OFFICE PARTITION
SYSTEM IS COMPATIBLE WITH MOST GLASS USED
FOR INTERIOR APPLICATIONS

USE THE FOLLOWING GASKET CHART FOR
DIFFERENT GLASS THICKNESS:

· 1/4" (6MM) GLASS - USE GASKETS
NP225 + NP225
AVAILABLE IN VINYL AND SILICONE

· 3/8" (10MM) GLASS - USE GASKETS
NP238 + NP238

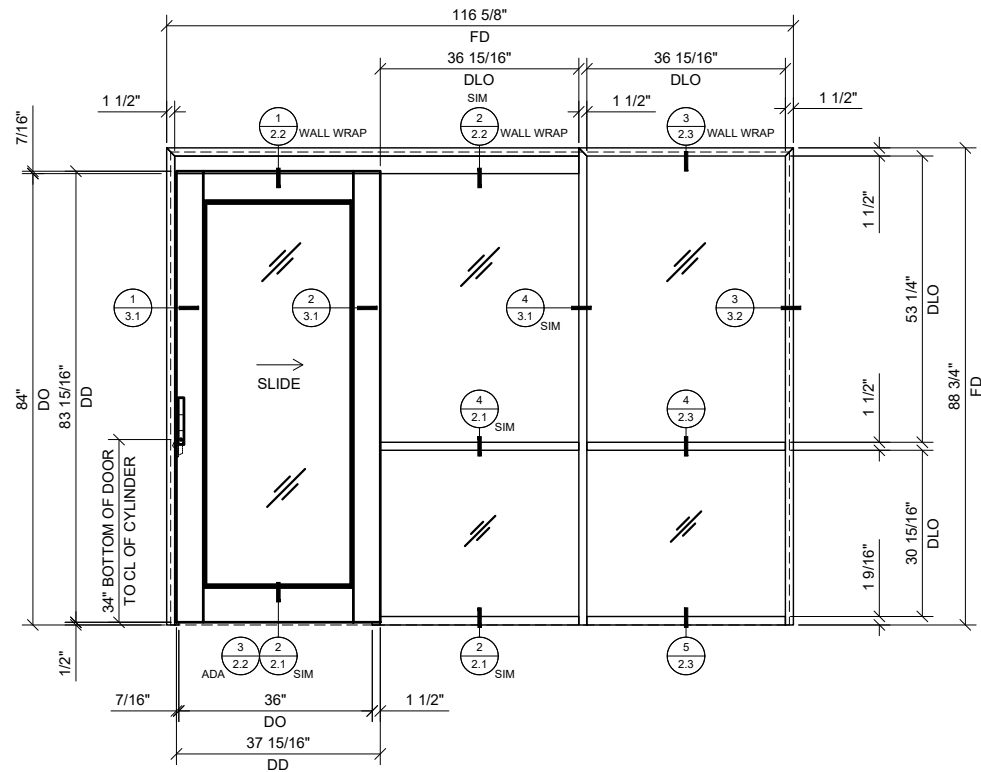
· 1/2" (12MM) GLASS - USE GASKETS
NP238 + NP563

· 9/16" (14MM) GLASS - USE GASKETS
NP563 + NP563

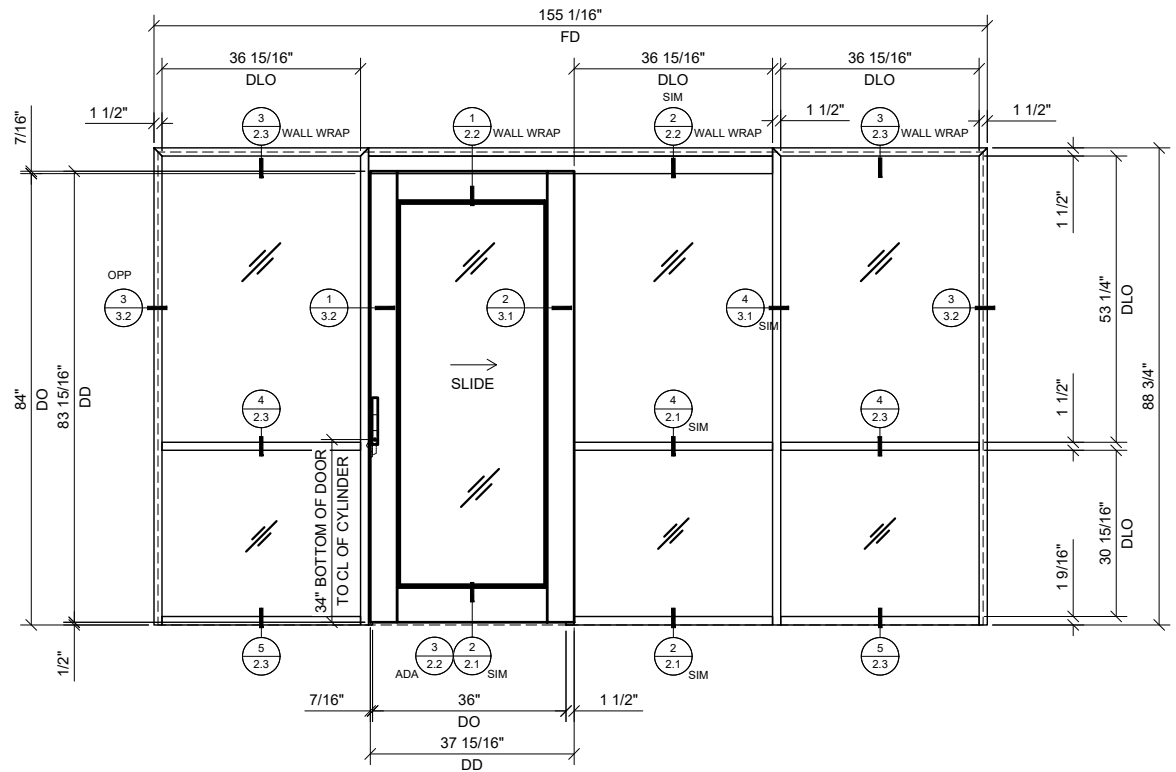
STANDARD ABBREVIATIONS

- RO = ROUGH OPENING
- FD = FRAME DIMENSION
- DLO = DAYLITE OPENING
- DO = DOOR OPENING
- DD = DOOR DIMENSION

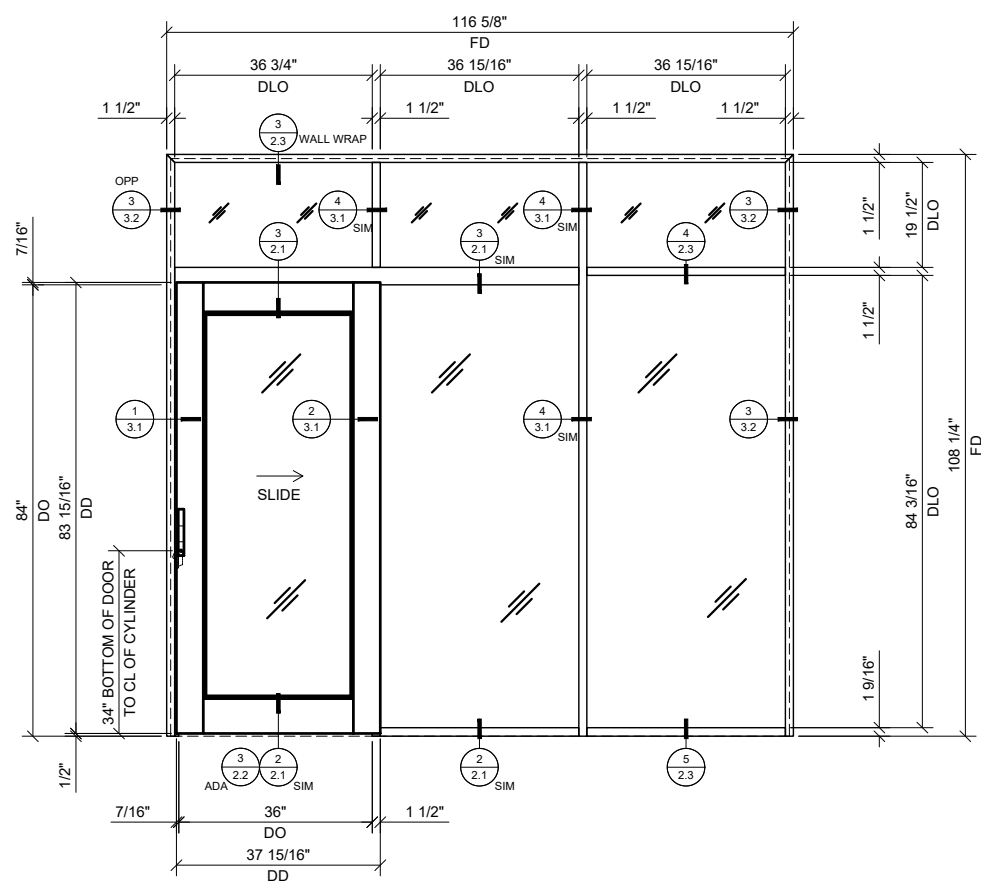
Revisions By:



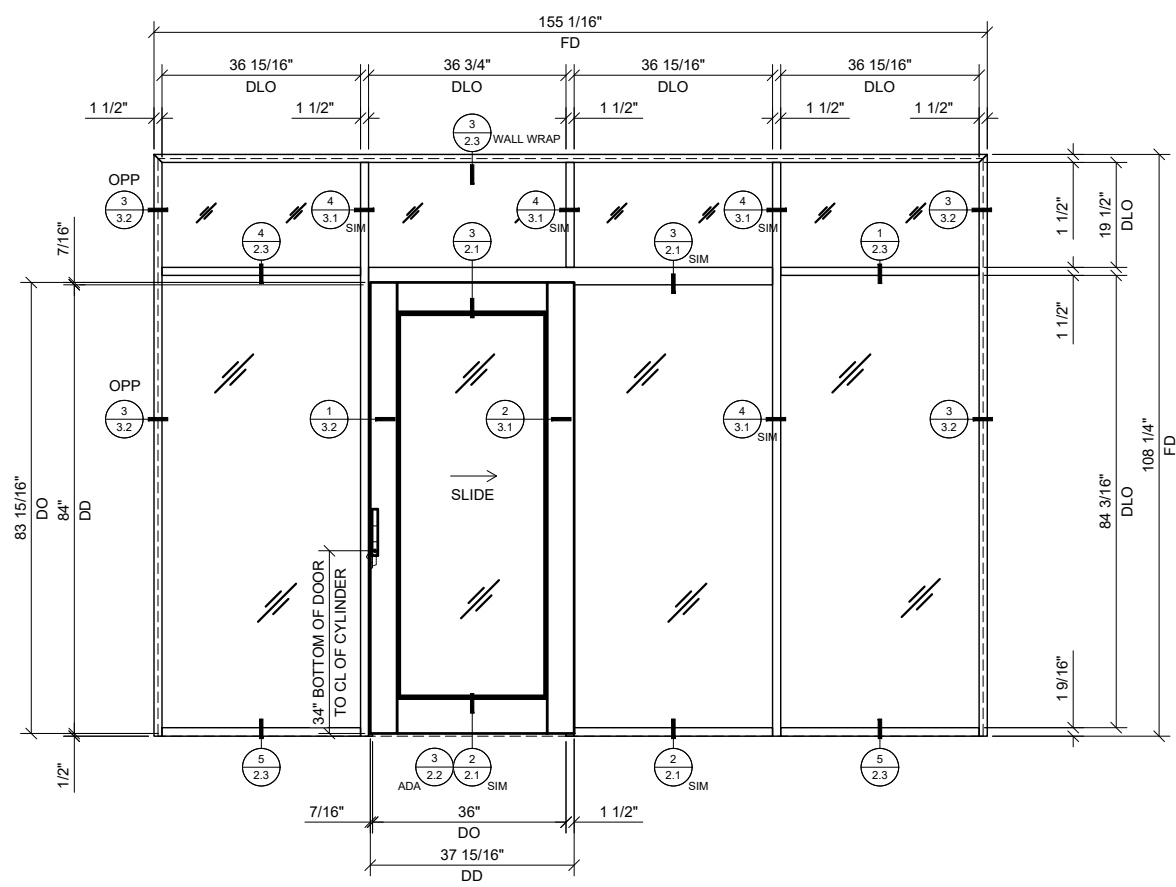
① SINGLE SLIDER WITH BAY & SIDELITE
3/4" = 1'-0" ARCH REF: N/A



③ SINGLE SLIDER WITH BAY & SIDELITE AT BOTH ENDS
3/4" = 1'-0" ARCH REF: N/A



② SINGLE SLIDER WITH BAY, TRANSOM & SIDELITE
3/4" = 1'-0" ARCH REF: N/A



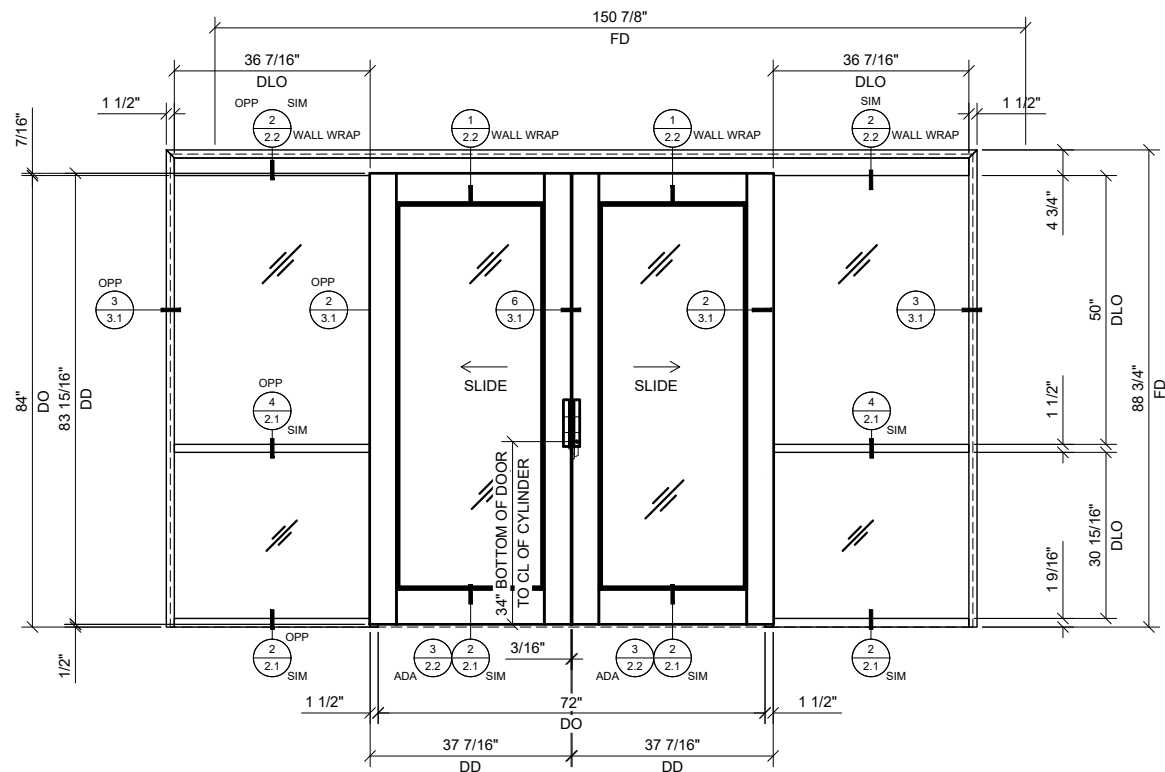
② SINGLE SLIDER WITH BAY, TRANSOM & SIDELITE AT EACH END
3/4" = 1'-0" ARCH REF: N/A

Description:
CRL 487
RAIL & STILE WIDE
STILE SLIDER

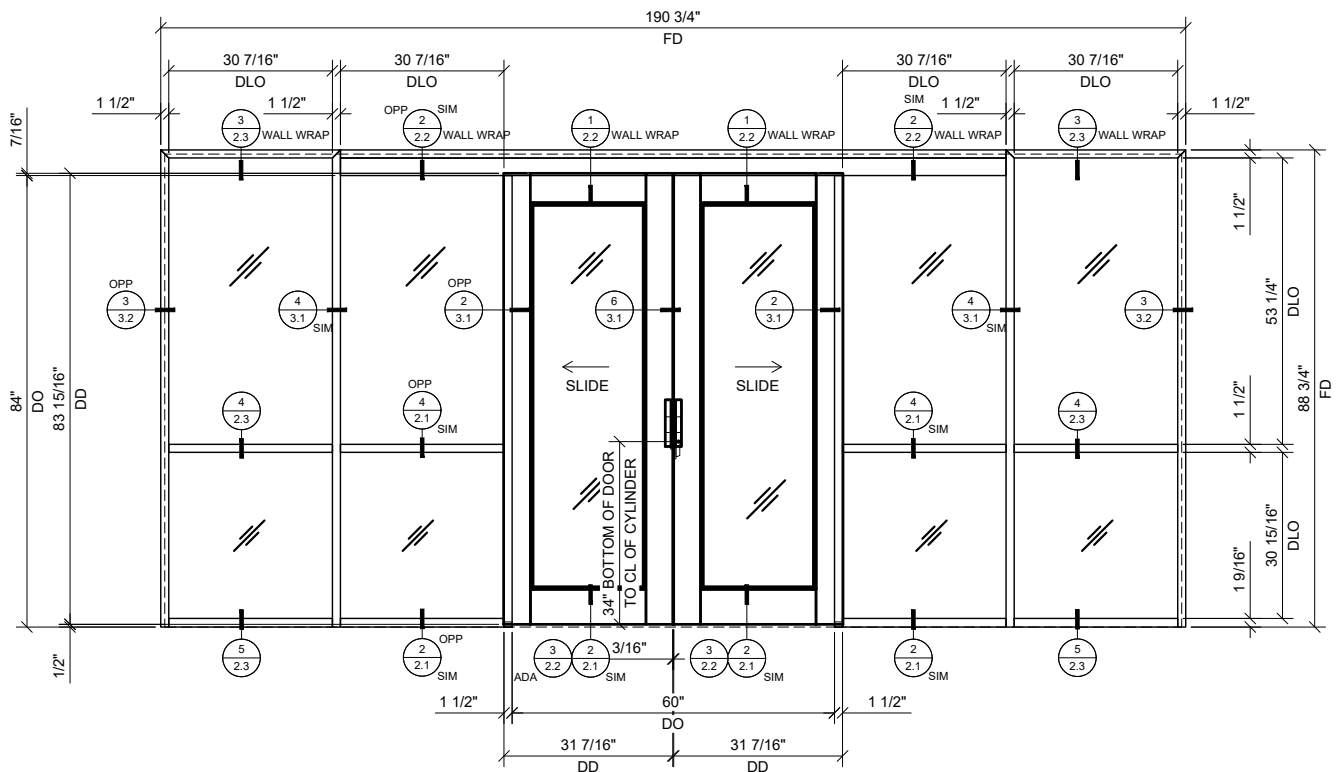
Drawn By: RPD
Date: 01/23/20
Scale: AS NOTED
File Name: CRL_487_1.5IN_SLIDER_OPS.dwg

Sheet
1.2W

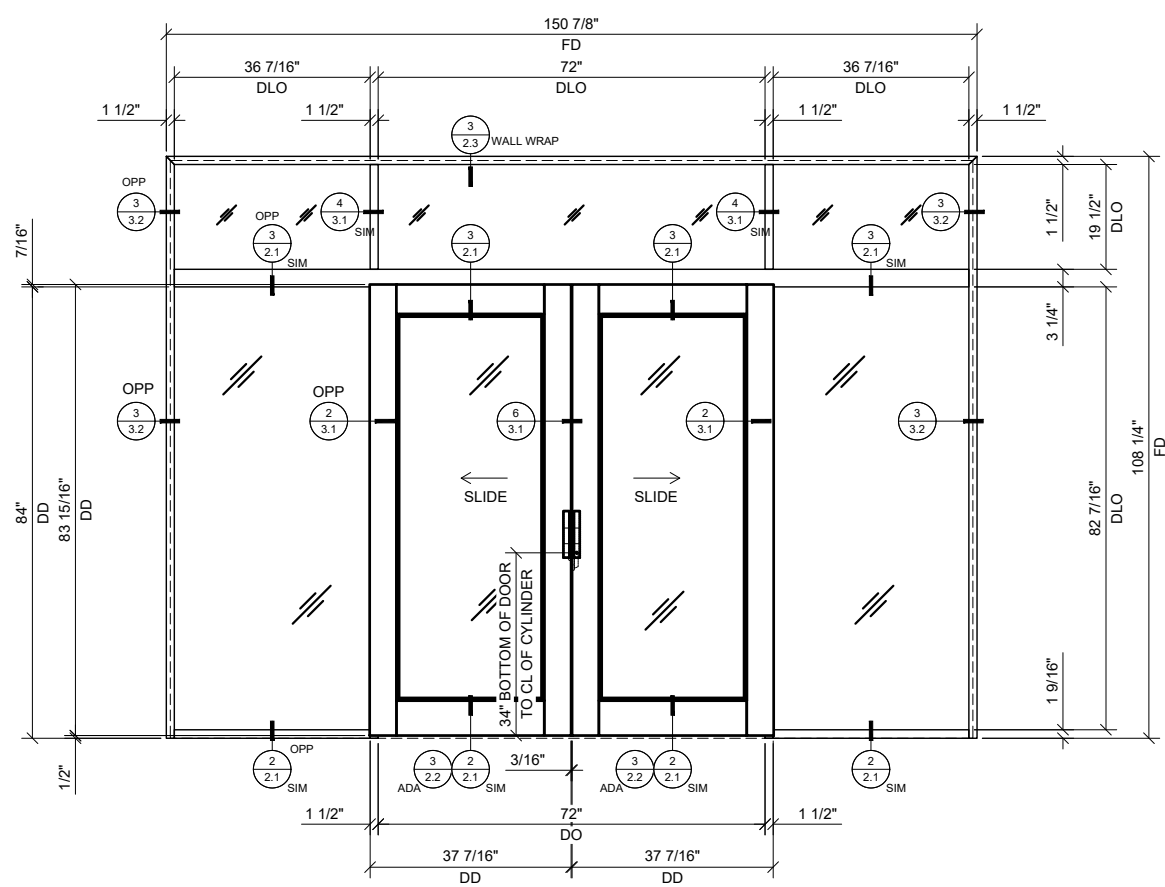
Revisions By:



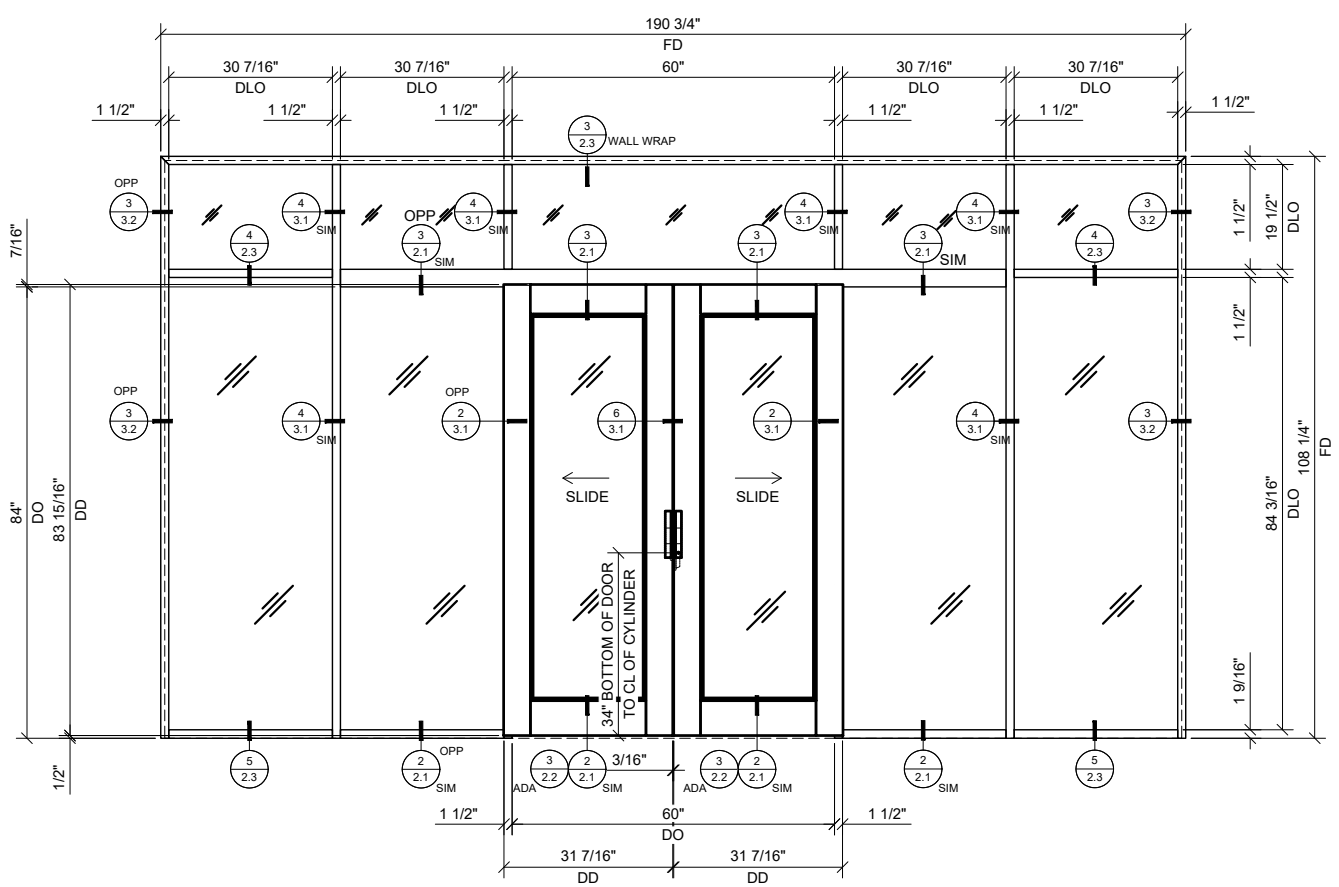
① BI-PART SLIDER WITH BAYS
3/4"=1'-0" ARCH REF: N/A



③ BI-PART SLIDER WITH BAY & SIDELITES AT EACH END
3/4"=1'-0" ARCH REF: N/A



② BI-PART SLIDER WITH BAYS & TRANSOM
3/4"=1'-0" ARCH REF: N/A

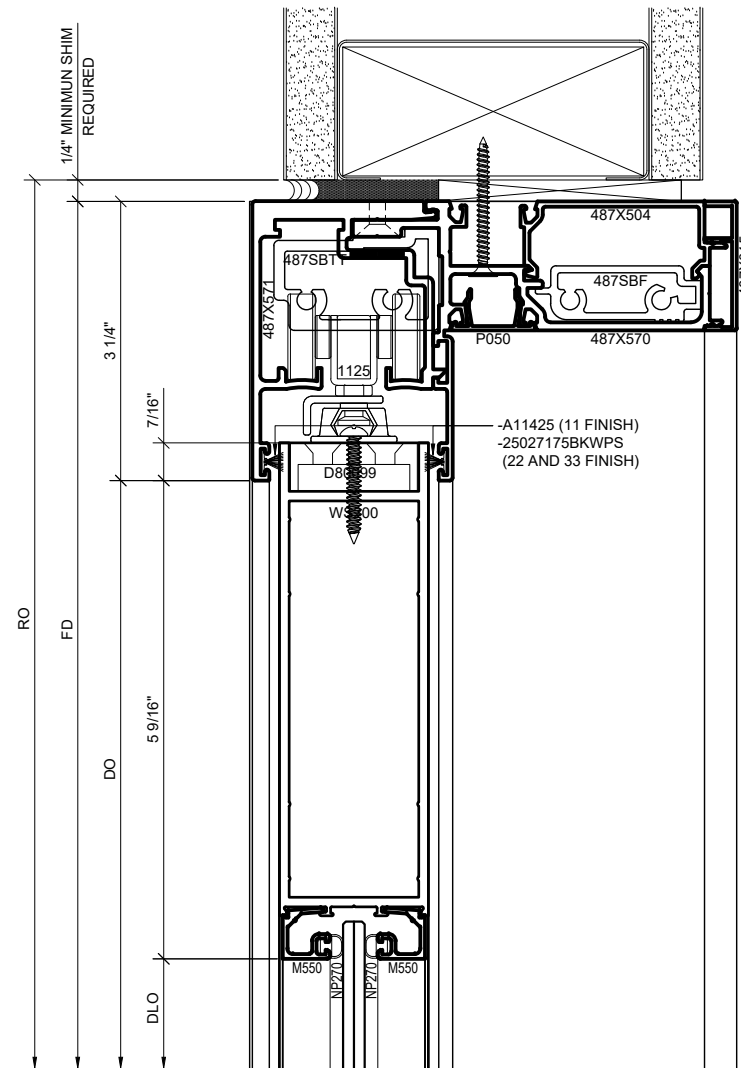


④ BI-PART SLIDER WITH BAY, TRANSOM & SIDELITES AT EACH END
3/4"=1'-0" ARCH REF: N/A

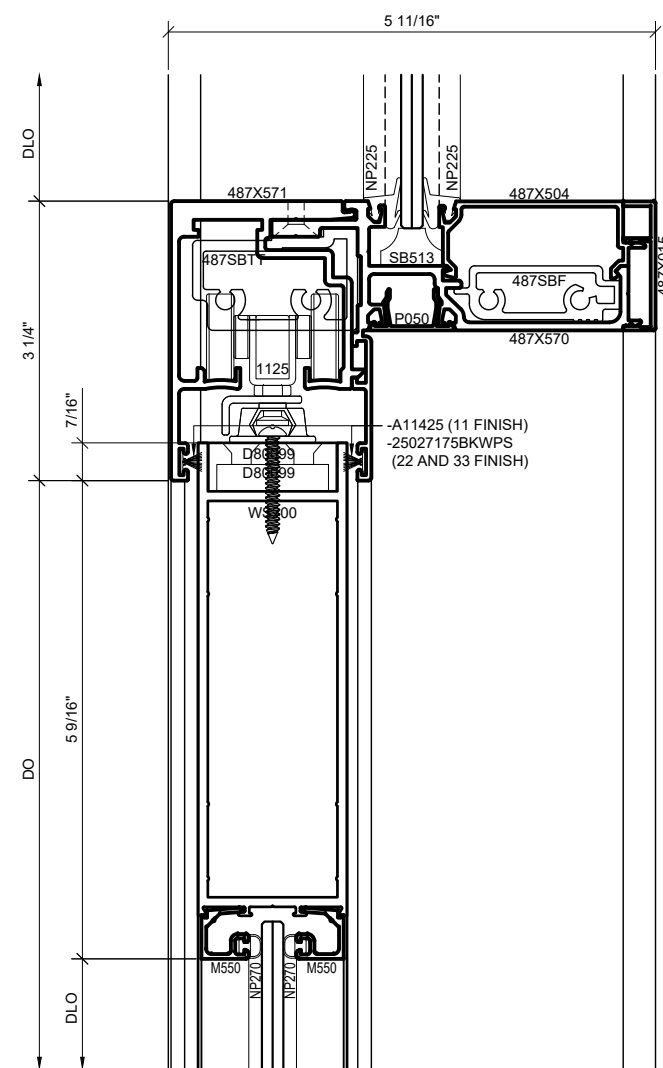
Description:
CRL 487
RAIL & STILE WIDE
STILE SLIDER

Drawn By: RPD
Date: 01/23/20
Scale: AS NOTED
File Name: CRL 487_1.5IN_SLIDER_OPS.dwg

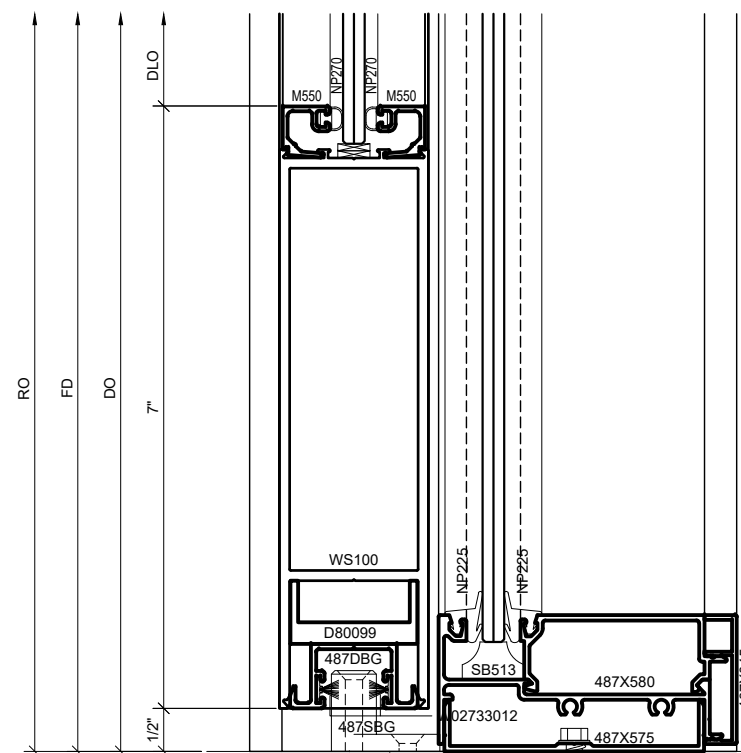
1 HEAD DETAIL AT SLIDER DOOR OPENING
1'-0"=1'-0" ARCH REF: N/A



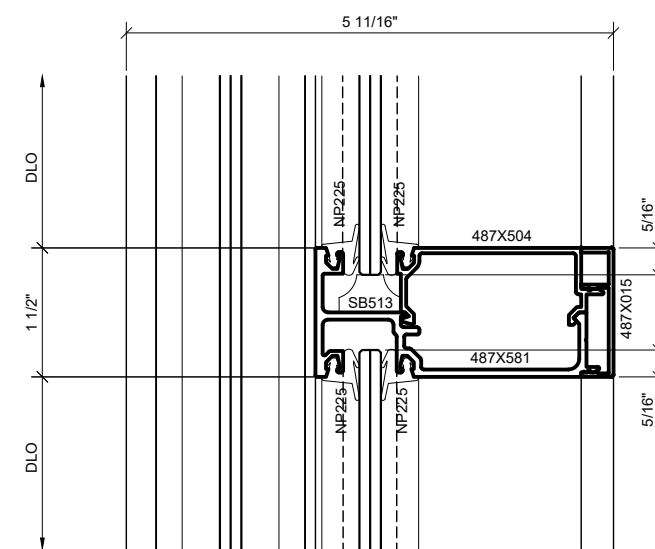
3 TRANSOM DETAIL AT SLIDER DOOR OPENING
1'-0"=1'-0" ARCH REF: N/A



2 SILL AT SLIDER DOOR OPENING
1'-0"=1'-0" ARCH REF: N/A



4 MUNTIN AT SLIDER BAY
1'-0"=1'-0" ARCH REF: N/A



NOTE: CRL STANDARD IS TO PROVIDE ADDITIONAL 1-5/8" SCRIBE LENGTH TO ALL VERTICALS TO ALLOW FOR FIELD CUTTING AND TO COMPENSATE FOR OUTGAGES IN THE FLOOR. THIS SYSTEM CAN BE ORDERED WITHOUT 'SCRIBE LENGTH' IF DESIRED.

Revisions By:

CRL

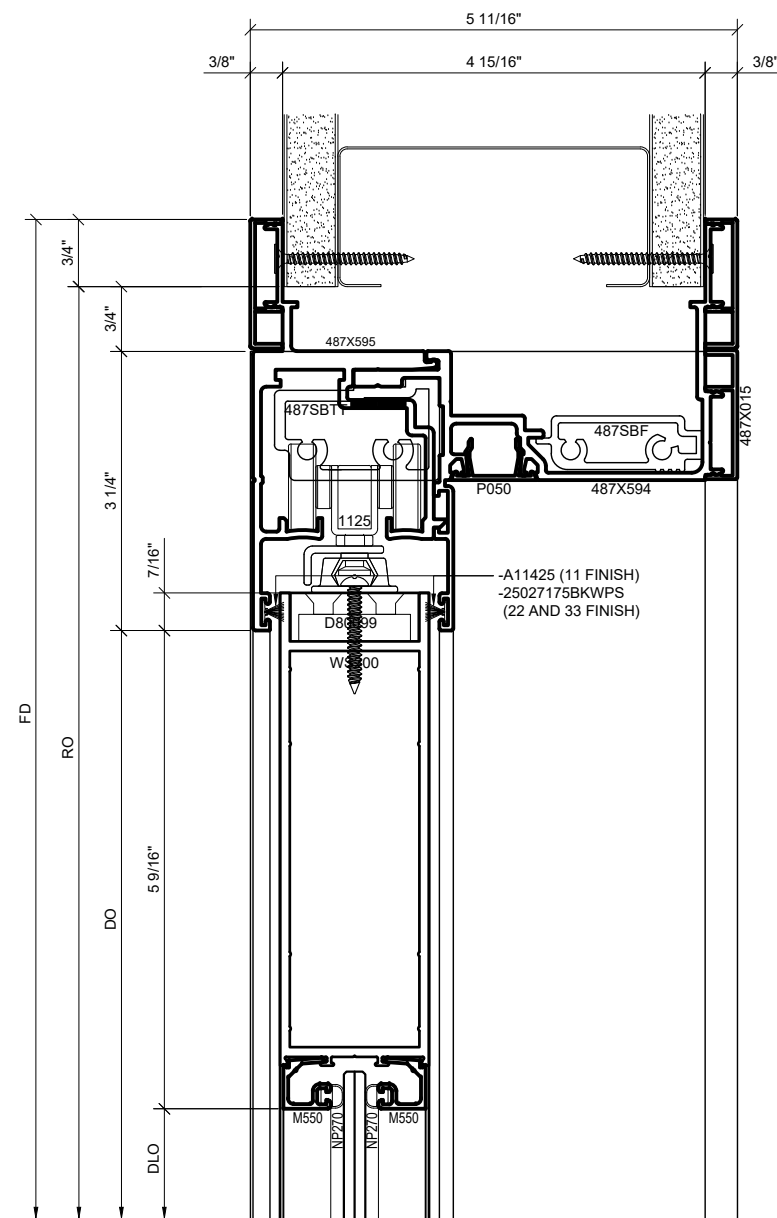
2503 E. Venice Avenue, Los Angeles, CA 90059-1887
PH: (800)-421-6144 FX: 800-587-7501 www.crlaerco.com

Description:
CRL 487
RAIL & STILE WIDE
STILE SLIDER

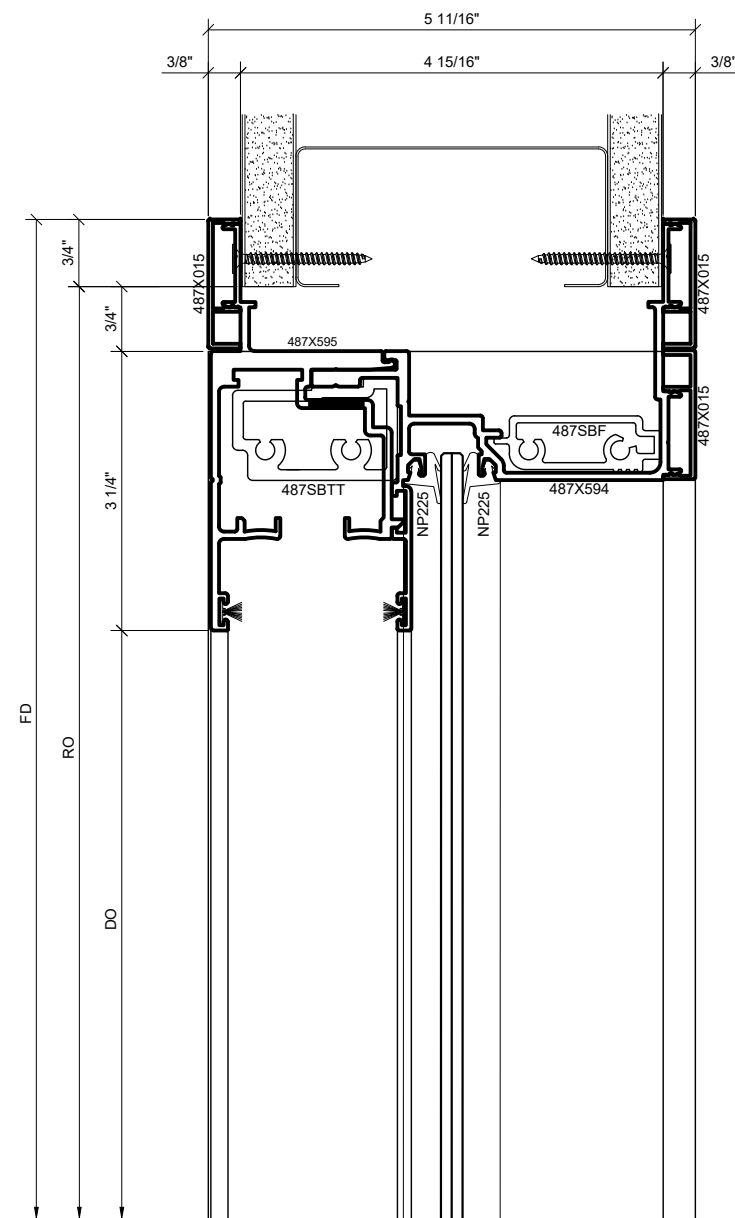
Drawn By: RPD
Date: 01/23/20
Scale: AS NOTED
File Name: CRL_487_1.5IN_SLIDER_OPS.dwg

Sheet

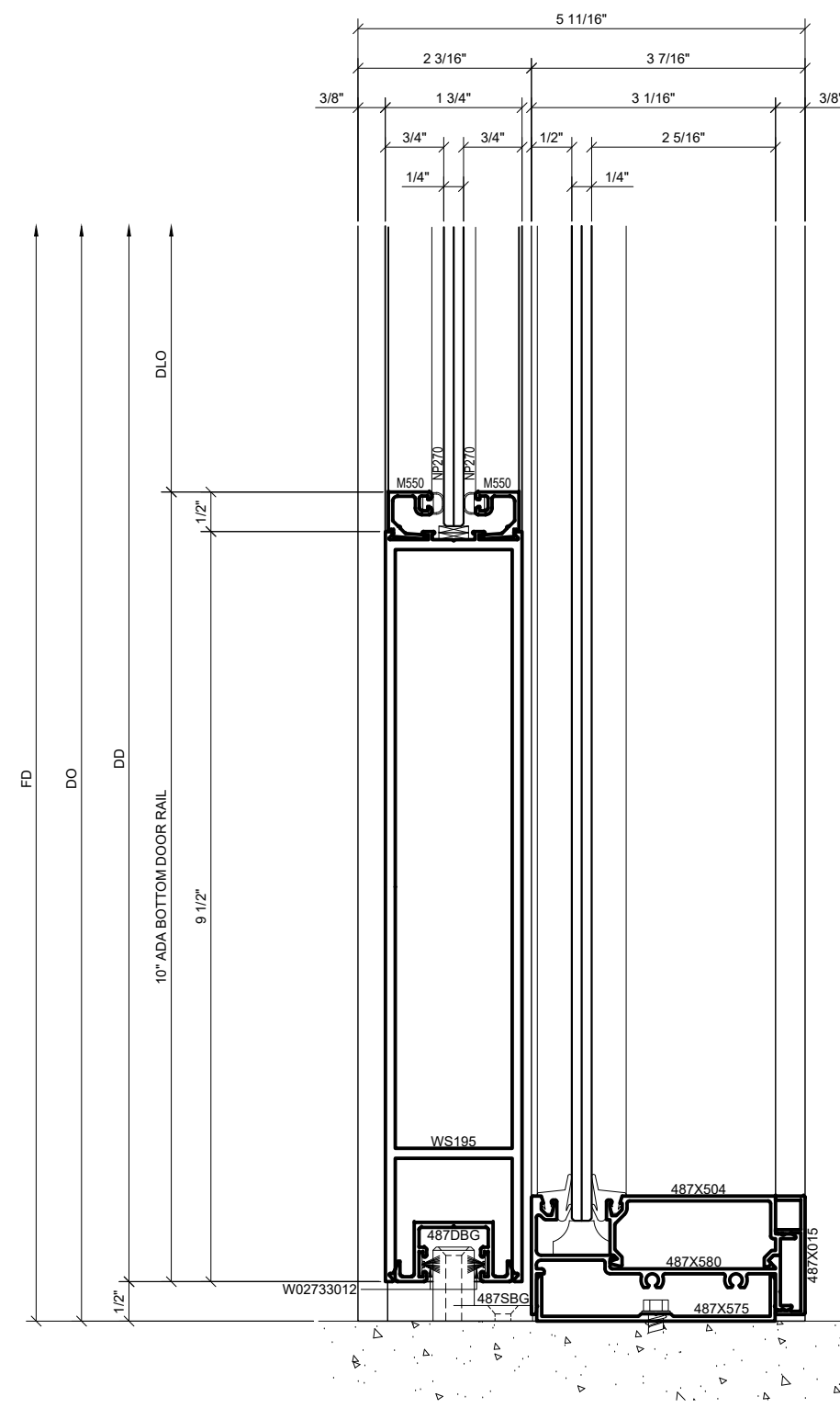
2.1



1 WALL-WRAPPED HEAD DETAIL AT SLIDER DOOR OPENING
1'-0"=1'-0" ARCH REF: N/A



2 WALL-WRAPPED HEAD DETAIL AT SLIDER BAY
1'-0"=1'-0" ARCH REF: N/A



3 ADA SILL AT SLIDER DOOR OPENING
1'-0"=1'-0" ARCH REF: N/A

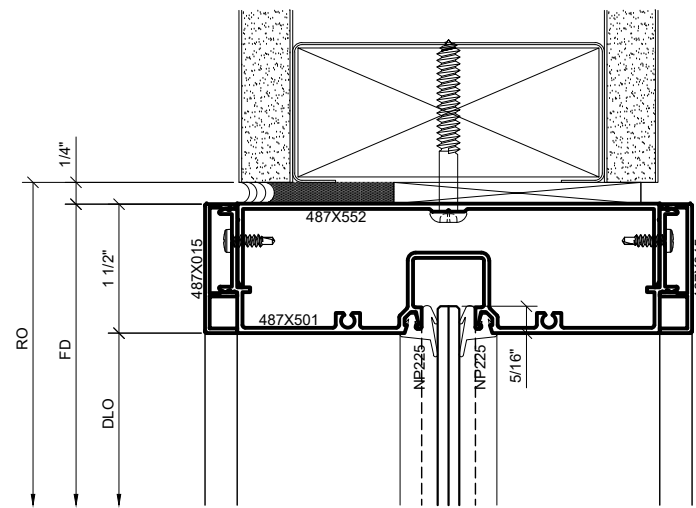
Revisions By:

CRL
2503 E. Venice Avenue, Los Angeles, CA 90059-1887
PH: (800)-421-6144 FX: 800-587-7501 www.crlaer.com

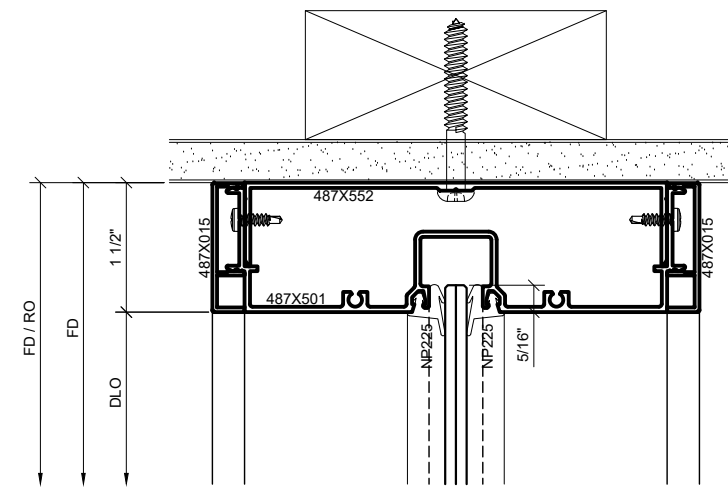
Description:
CRL 487
RAIL & STILE WIDE
STILE SLIDER

Drawn By: RPD
Date: 01/23/20
Scale: AS NOTED
File Name: CRL_487_1.5IN_SLIDER_OPS.dwg

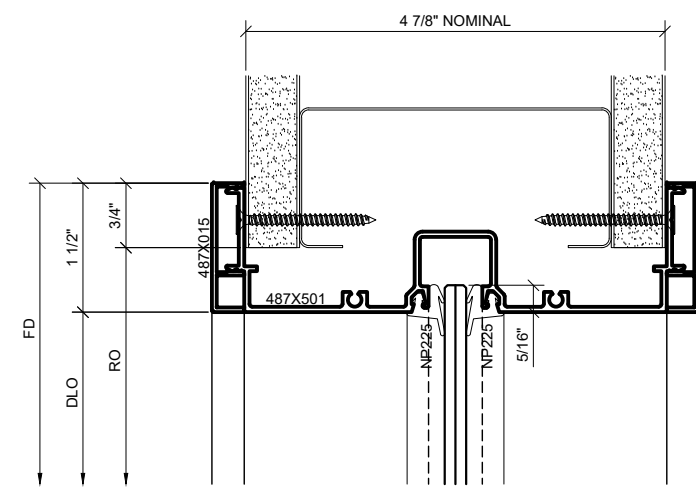
Sheet
2.2



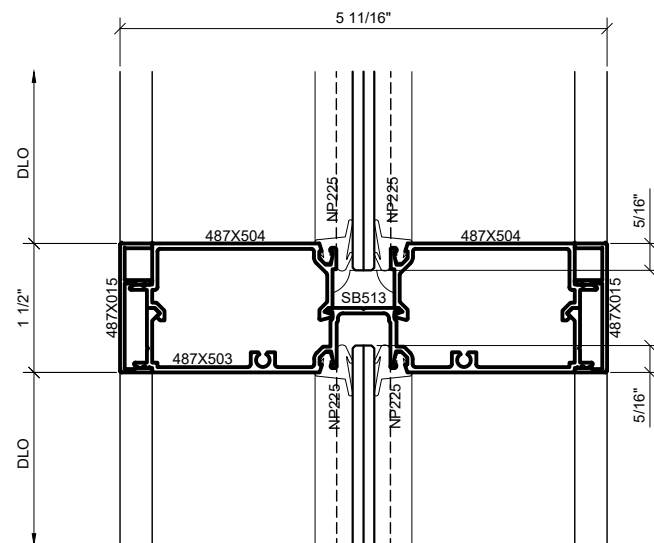
① SERIES 487 OPS SURFACE MOUNT HEAD DETAIL AT SIDELITE (w/ SHIM)
1'-0"=1'-0" ARCH REF: N/A



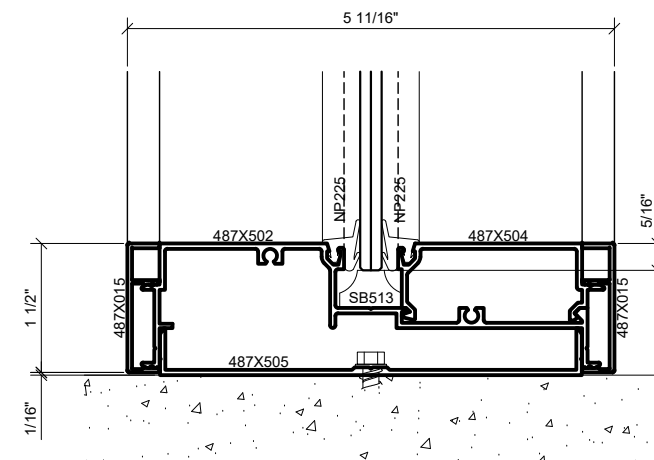
② SERIES 487 OPS SURFACE MOUNT HEAD DETAIL AT SIDELITE (NO SHIM)
1'-0"=1'-0" ARCH REF: N/A



③ SERIES 487 OPS WALL-WRAPPED TRANSOM HEAD DETAIL AT INT. VERTICAL
1'-0"=1'-0" ARCH REF: N/A



④ SERIES 487 OPS TYP HORIZONTAL DETAIL
1'-0"=1'-0" ARCH REF: N/A



⑤ SERIES 487 OPS TYP SILL AT FLOOR DETAIL
1'-0"=1'-0" ARCH REF: N/A

Revisions By:



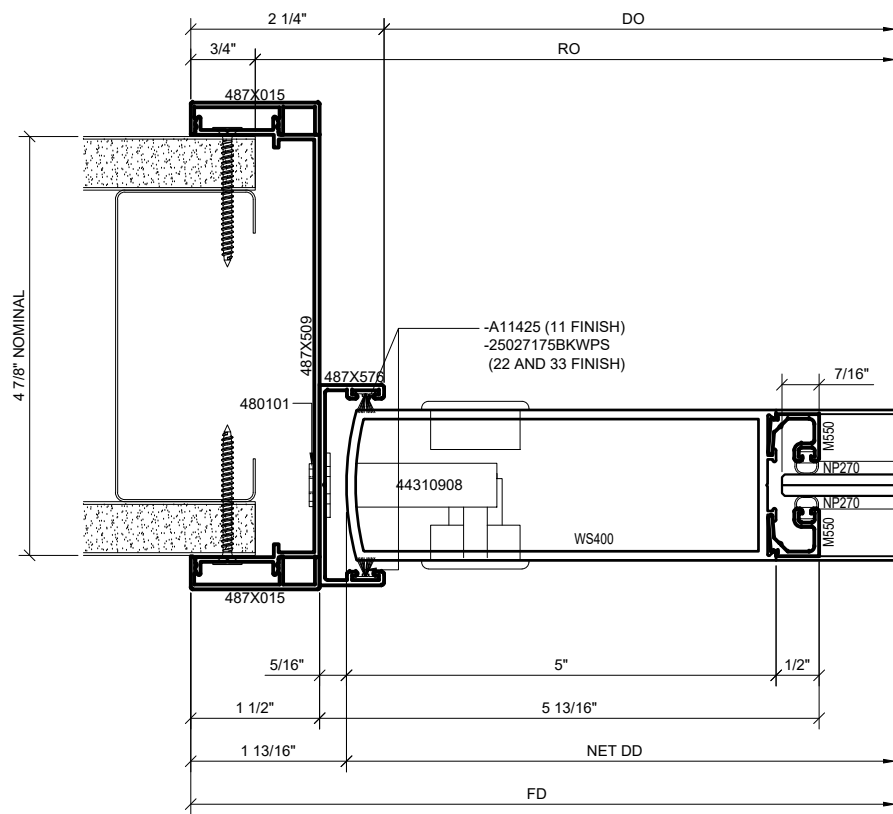
2603 E. Venice Avenue, Los Angeles, CA 90059-1887
PH (800)-421-6144 FX: 800-587-7501 www.crlaurence.com

Description:
CRL 487
RAIL & STILE WIDE
STILE SLIDER

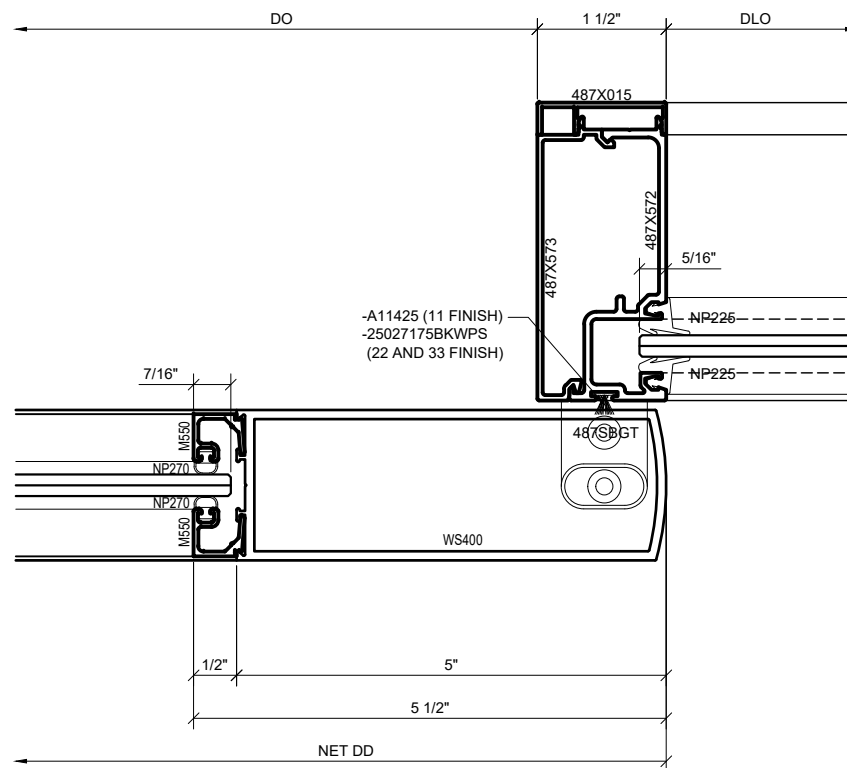
Drawn By: RPD
Date: 01/23/20
Scale: AS NOTED
File Name: CRL_487_1.5IN_SLIDER_OPS.dwg

Sheet

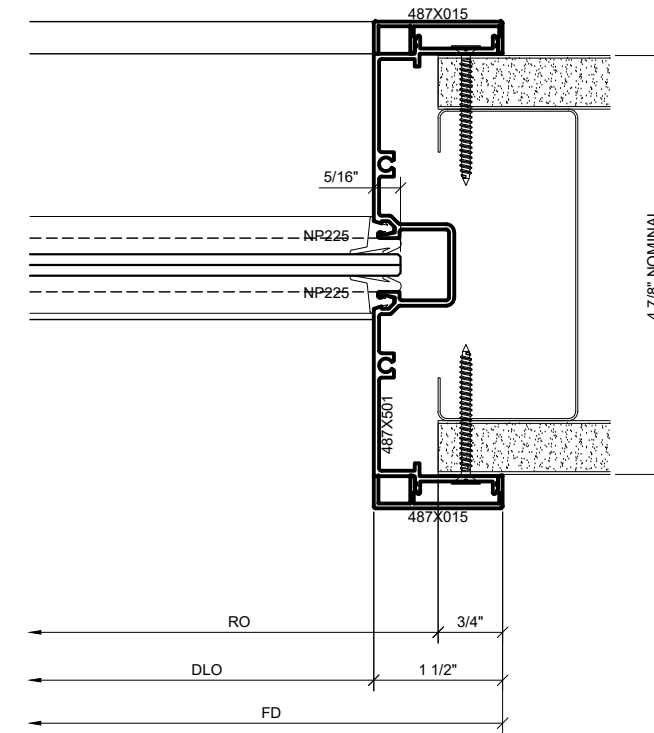
2.3



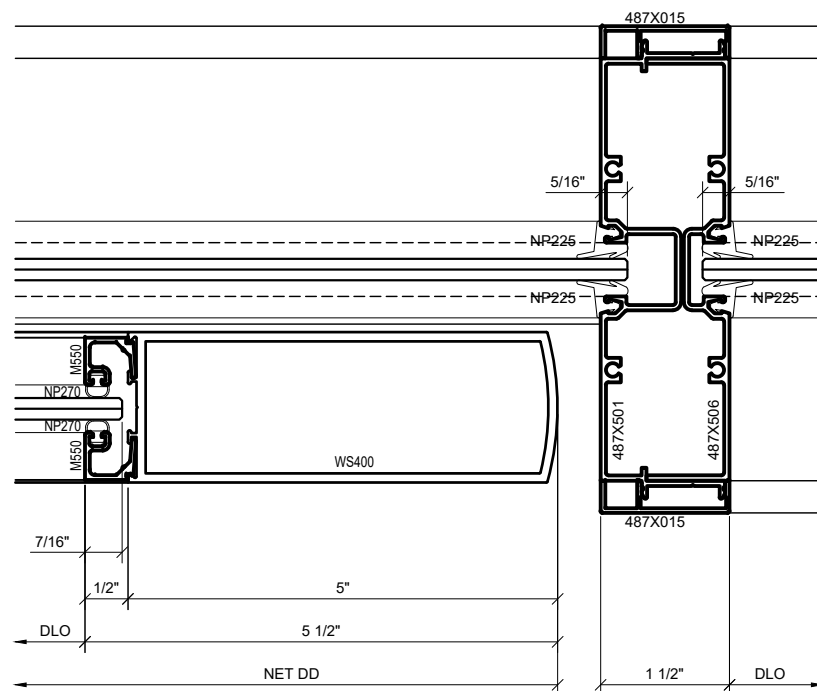
1 SERIES 487 OPS INTEGRATED SLIDER STRIKE JAMB DETAIL (CLOSED)
1'-0"=1'-0" ARCH REF: N/A



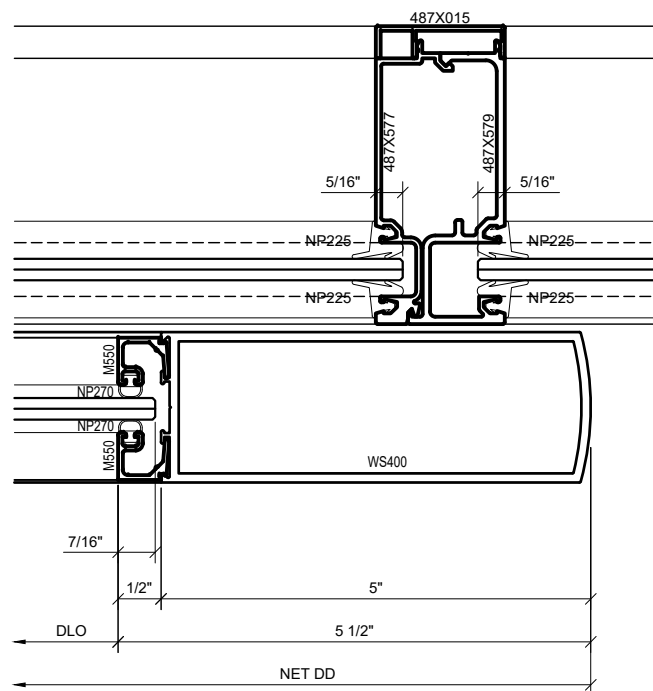
2 SERIES 487 OPS INTEGRATED SLIDER INTERMEDIATE JAMB DETAIL (CLOSED)
1'-0"=1'-0" ARCH REF: N/A



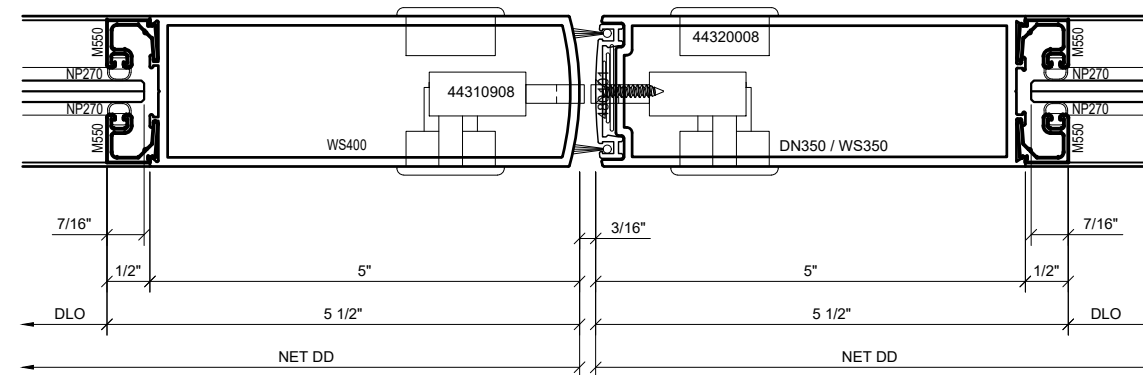
3 SERIES 487 OPS INTEGRATED SLIDER WALL JAMB DETAIL
1'-0"=1'-0" ARCH REF: N/A



4 SERIES 487 OPS INTEGRATED SLIDER TRANSITION VERTICAL-SLIDER TO STANDARD (OPEN)
1'-0"=1'-0" ARCH REF: N/A



5 SERIES 487 OPS INTEGRATED SLIDER SHALLOW VERTICAL DETAIL (OPEN)
1'-0"=1'-0" ARCH REF: N/A



6 SERIES 487 OPS INTEGRATED SLIDER MEETING STILES AT DOOR PAIR DETAIL
1'-0"=1'-0" ARCH REF: N/A

Revisions By:

CRL

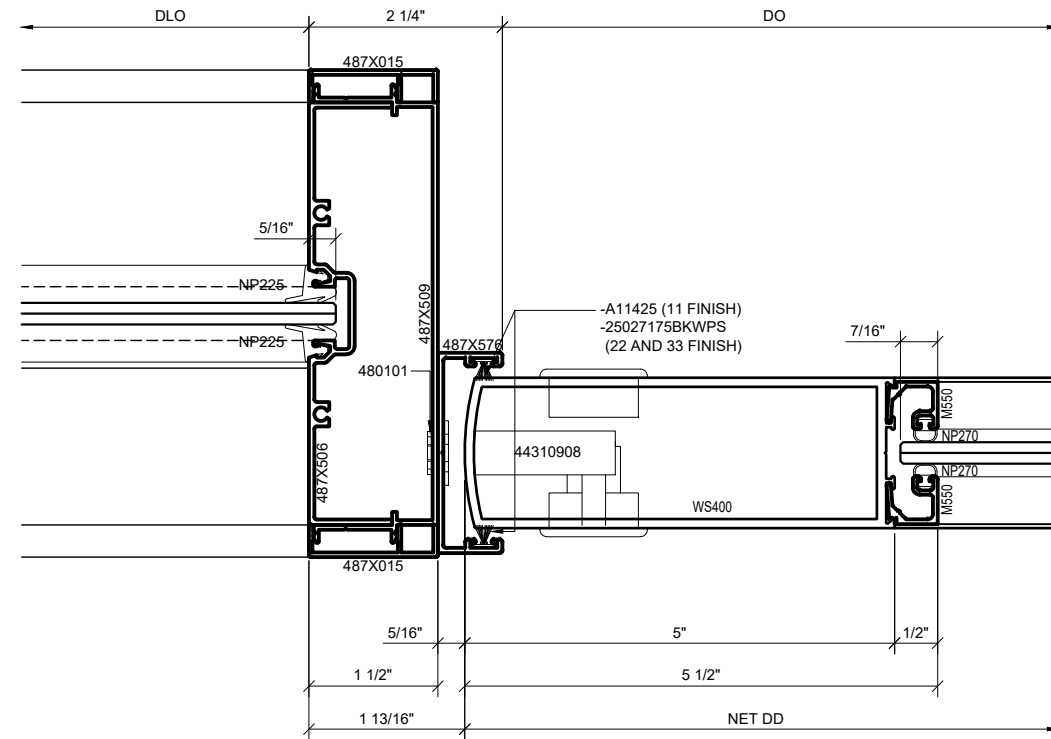
2503 E. Venice Avenue, Los Angeles, CA 90059-1887
PH: (800)-421-6144 FX: 800-587-7501 www.crlaurence.com

Description:
CRL 487
RAIL & STILE WIDE
STILE SLIDER

Drawn By: RPD
Date: 01/23/20
Scale: AS NOTED
File Name:
CRL_487_1.5IN_SLIDER_OPS.dwg

Sheet

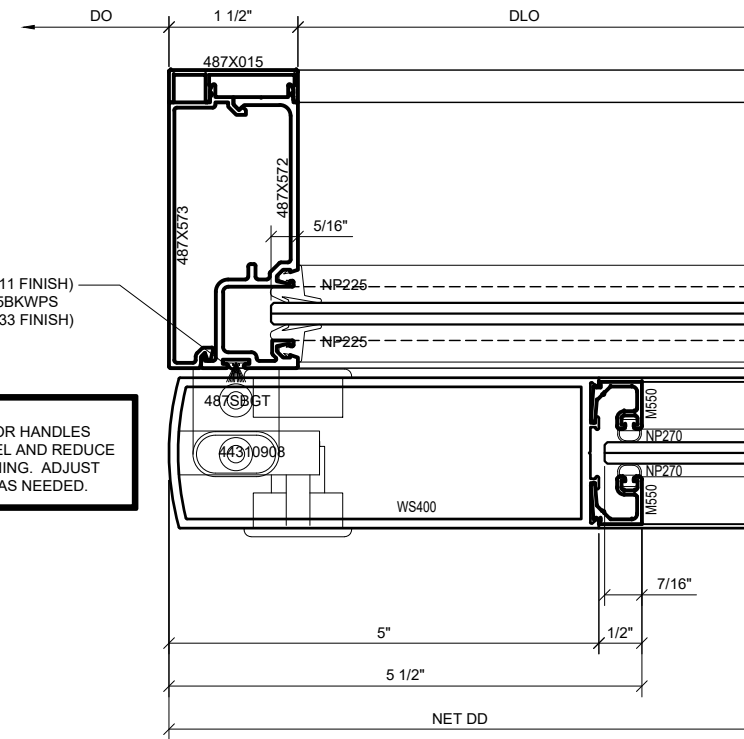
3.1



1 SERIES 487 OPS INTEGRATED SLIDER TRANSITION
VERTICAL-STANDARD TO STRIKE JAMB (CLOSED)

1'-0"=1'-0"

ARCH REF: N/A

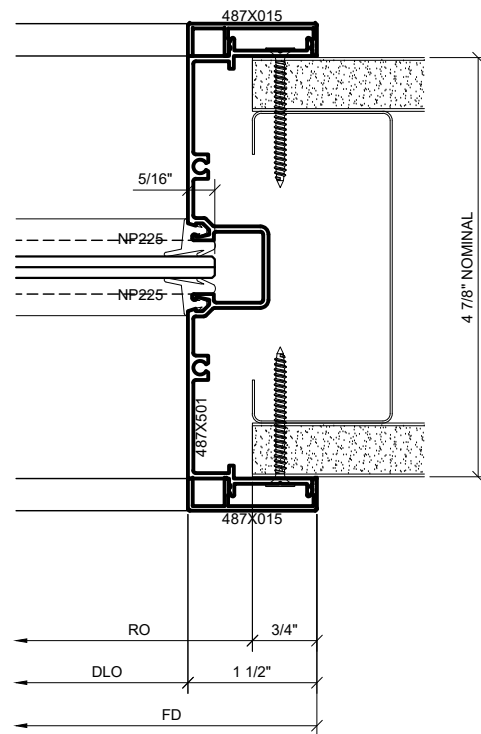


2 SERIES 487 OPS INTEGRATED SLIDER TRANSITION
VERTICAL-STANDARD TO INTERMEDIATE JAMB DETAIL (OPEN)

1'-0"=1'-0"

ARCH REF: N/A

NOTE:
USE OF OTHER LOCKS OR HANDLES
WILL LIMIT DOOR TRAVEL AND REDUCE
THE CLEAR DOOR OPENING. ADJUST
DOOR OPENING WIDTH AS NEEDED.



3 SERIES 487 OPS STANDARD JAMB DETAIL

1'-0"=1'-0"

ARCH REF: N/A

Revisions By:

CRL.

2503 E. Venice Avenue, Los Angeles, CA 90059-1887
PH: (800)-421-6144 FX: 800-587-7501 www.crlaurence.com

Description:
CRL 487
RAIL & STILE WIDE
STILE SLIDER

Drawn By: RPD
Date: 01/23/20
Scale: AS NOTED
File Name:
CRL_487_1.5IN_SLIDER_OPS.dwg

Sheet

3.2