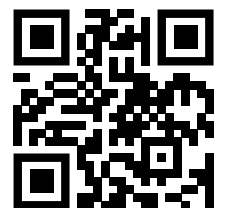




2" ADJUSTABLE STANDOFF RSOB2X



Scan here to view
installation video



PARTS AT A GLANCE

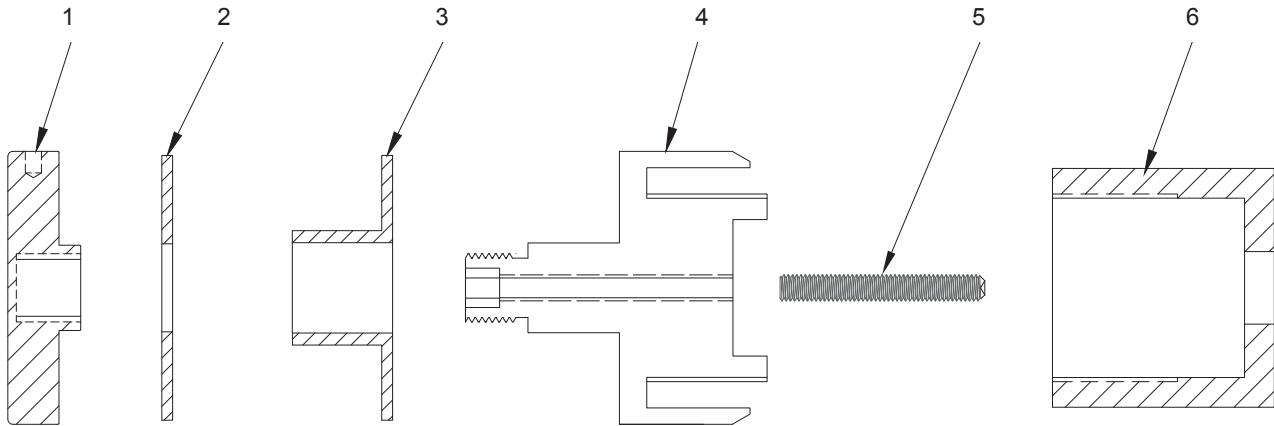


Figure 1a

| PART LISTS | | |
|------------|-----|-------------------|
| ITEM | QTY | DESCRIPTION |
| 1 | 1 | CAP |
| 2 | 1 | WASHER 1 |
| 3 | 1 | WASHER 2 |
| 4 | 1 | BODY |
| 5 | 1 | LOCKING SET SCREW |
| 6 | 1 | BASE |

PLEASE REFERENCE FIGURE 1A ABOVE FOR COMPONENT CALL-OUTS IN THE FOLLOWING INSTRUCTIONS:

1. Glass fabrication: 15/16" diameter hole for 3/4" to 27/32" thick glass.
2. Secure standoff base (6) to substrate using recommended fastener and torque value supplied in CRL's SRS Adjustable Standoff engineering report.
3. Using 1/4" Allen wrench to fasten mid-body assembly (4) onto standoff base and fasten to the desired projection from substrate to glass surface. Add inside body gasket (3) on top of mid-body assembly.
 - a. Standoff bases have a 1/2" glass projection adjustment as shown in Figure 1b below; substrate to glass surface from 1-7/8" to 2-3/8".

GLASS PROJECTION 1/2" ADJUSTMENT

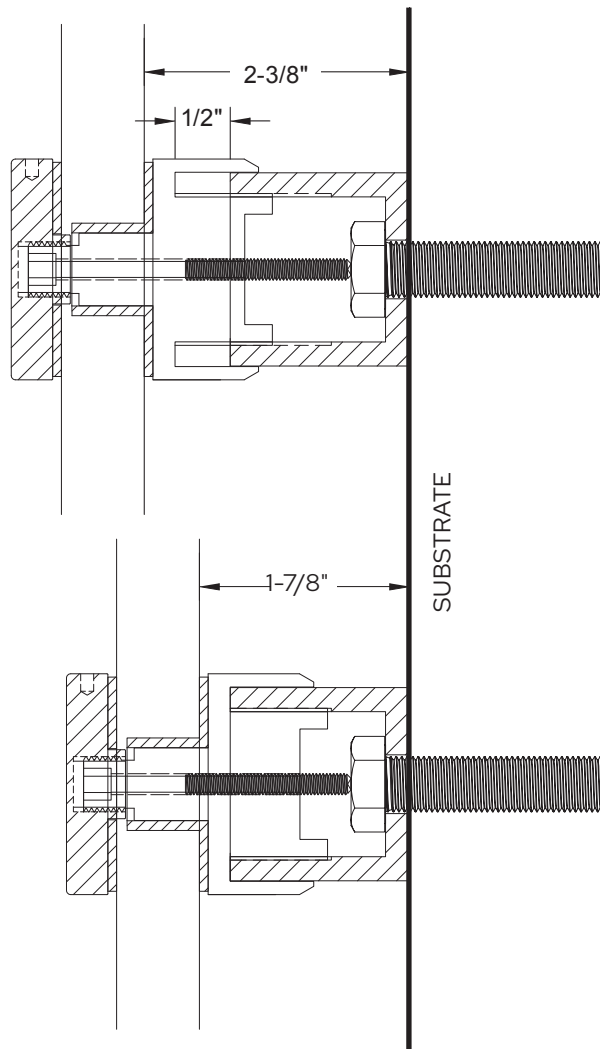


Figure 1b

4. Use 3/32" Allen wrench to fasten set screw (5) into (4) until there is resistance. This will indicate that the glass projection from the substrate is locked to the desired dimension.
5. To install glass, position the fabricated glass hole concentrically over the projecting portion of (3 & 4) and firmly hold glass against the body gasket (3)..
 - a. Whilst holding glass firmly toward body gasket (3), further glass projection can be performed at this stage following the Step 3 procedure above if needed.
6. While holding glass in flush position, hand-fasten cap assembly (1, 2) until glass is clamped.
 - a. Finish fastening cap (1, 2) to clamp glass in position using one of the CRL's tools shown below:



CRL Zinc Cap Assembly Spanner Wrench

Cat. No. SSW12

CRL Adjustable Strap Wrench

Cat. No. ASW12

b. Full assembly shown in Figure 2a below.

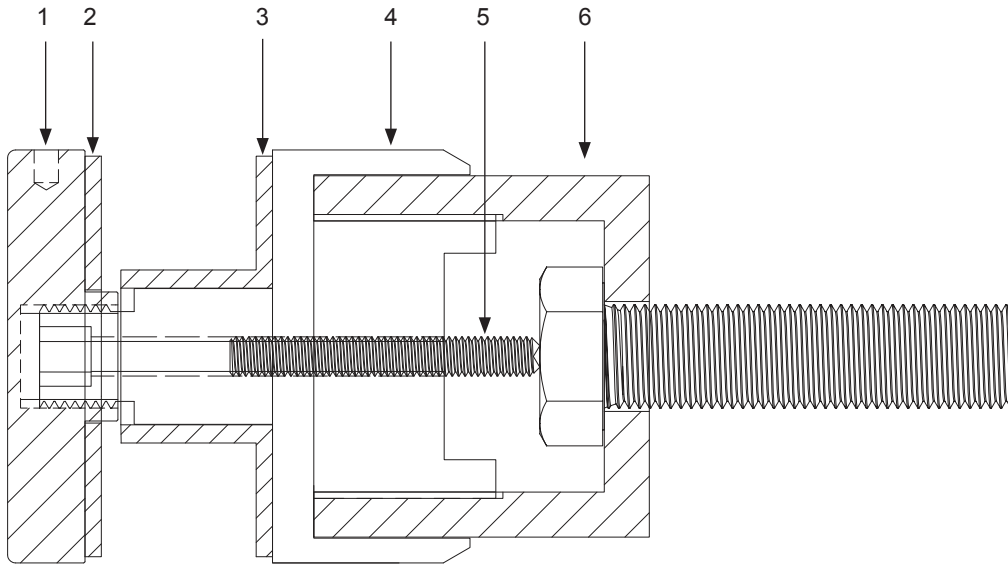


Figure 2a

| PART LISTS | | |
|------------|-----|-------------------|
| ITEM | QTY | DESCRIPTION |
| 1 | 1 | CAP |
| 2 | 1 | WASHER1 |
| 3 | 1 | WASHER 2 |
| 4 | 1 | BODY |
| 5 | 1 | LOCKING SET SCREW |
| 6 | 1 | BASE |

2" ADJUSTABLE STANDOFF RS0B2X

ADJUSTABLE STANDOFF GLASS HEIGHT LIMITATIONS

Allowable heights to withstand 50 plf top load. Use 3/4" (19 mm) to 27/32" (21 mm) glass.

2 Standoff Pairs With 4" Spacing

| | | | | |
|-----------------------|----|----|----|----|
| Glass Width (in) | 36 | 48 | 60 | 72 |
| Allowable Height (in) | 50 | 42 | 42 | 36 |

3 Standoff Pairs With 4" Spacing

| | | | | |
|-----------------------|----|----|----|----|
| Glass Width (in) | 36 | 48 | 60 | 72 |
| Allowable Height (in) | 50 | 50 | 42 | 36 |

2 Standoff Pairs With 6" Spacing

| | | | | |
|-----------------------|----|----|----|----|
| Glass Width (in) | 36 | 48 | 60 | 72 |
| Allowable Height (in) | 50 | 50 | 42 | 36 |

3 Standoff Pairs With 6" Spacing

| | | | | |
|-----------------------|----|----|----|----|
| Glass Width (in) | 36 | 48 | 60 | 72 |
| Allowable Height (in) | 50 | 50 | 42 | 36 |

Allowable heights to withstand 200 lb concentrated load. Use 3/4" (19 mm) to 27/32" (21 mm) glass.

2 Standoff Pairs With 4" Spacing

| | | | | |
|-----------------------|-----|-----|-----|-----|
| Glass Width (in) | 36 | 48 | 60 | 72 |
| Allowable Height (in) | N/A | N/A | N/A | N/A |

3 Standoff Pairs With 4" Spacing

| | | | | |
|-----------------------|----|----|----|----|
| Glass Width (in) | 36 | 48 | 60 | 72 |
| Allowable Height (in) | 36 | 42 | 36 | 36 |

2 Standoff Pairs With 6" Spacing

| | | | | |
|-----------------------|----|----|----|-----|
| Glass Width (in) | 36 | 48 | 60 | 72 |
| Allowable Height (in) | 36 | 36 | 36 | N/A |

3 Standoff Pairs With 6" Spacing

| | | | | |
|-----------------------|----|----|----|----|
| Glass Width (in) | 36 | 48 | 60 | 72 |
| Allowable Height (in) | 42 | 42 | 42 | 42 |

NOTE: Heights are measured beginning at upper standoff