

Installation

Bradley Lavatory Carrier

Verge® Lavatory Systems

Express® Lavatory Systems

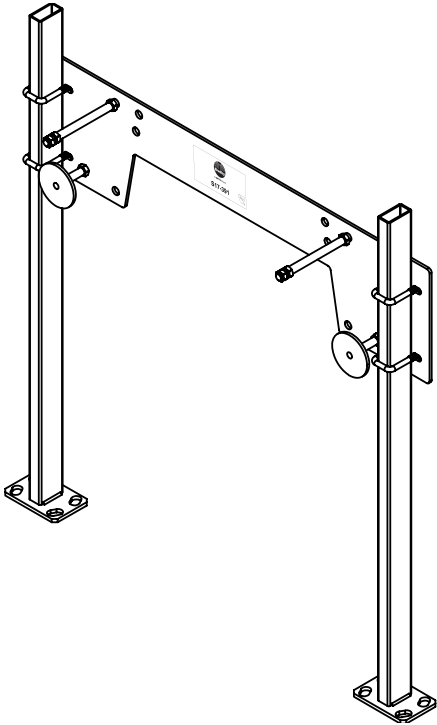


Table of Contents

Safety Information	2
Supplies Required	2
Installation.....	3
Mounting Dimensions	6



Read the instructions in this manual before beginning installation. Save these instructions and refer to them for inspection, maintenance, and troubleshooting information.

For questions regarding the operation, installation or maintenance of this product, visit bradleycorp.com or call 800.BRADLEY (800.272.3539).

Product warranties and parts information may also be found under "Resources" on our website at bradleycorp.com.

Safety Information

WARNING

WARNING: Cancer and Reproductive Harm 4 www.p65warnings.ca.gov

ILLUSTRATIONS, DESCRIPTIONS AND DIMENSIONS: All illustrations, detail drawings, and accompanying descriptions refer to standard features of each product and do not necessarily show or describe the variations available. All designs are subject to change without notice, and unless specifically stated on order, material will be furnished of design in effect at the time the order is filled. All weights are approximate.

IMPORTANT

Read this entire installation manual to ensure proper installation. When finished with the installation, file this manual with the owner or maintenance department. Compliance and conformity to local codes and ordinances is the responsibility of the installer. Product warranties may be found under "Resources" on our website at www.bradleycorp.com.

Separate parts from packaging and make sure all parts are accounted for before discarding any packaging material. If any parts are missing, do not begin installation until you obtain the missing parts.

Troubleshooting and internal maintenance must be performed by qualified service personnel.

Supplies Required

Some or all of the following tools may be required during installation:

- Submittal drawing of lavatory
- Submittal drawing of Josam carrier
- Tape measure
- Level
- Hammer drill
- Drill bits (concrete and standard)
- 1/2" Concrete anchors (four per upright)
- Wrenches
- Standard socket set
- Safety glasses or goggles
- Gloves
- Utility knife

Installation

⚠ IMPORTANT Read all installation instructions prior to starting the job. This will avoid costly mistakes.

A Mark lavatory centerline. Review the submittal drawing for the selected lavatory. Identify the desired centerline location and mark it (on the floor works well for reference when positioning carrier uprights).

B Lay out carrier uprights. Using the mounting dimensions page for your carrier, measure from the lavatory centerline and mark the locations of the carrier uprights along the bottom of the wall.



Dimensions are to the outside edge of the foot plate.

C Set floor anchors. Drill holes and install anchors for the carrier uprights. ½" anchors that extend a few inches above the floor are recommended (anchors are not supplied).

D Assemble U-bolts. Refer to the installation diagram (page 5). Insert U-bolts through the front side of the plate (side with the Bradley logo/markings). Loosely install washers and nuts on the backside.

E Install plate and uprights. Depending on your application, choose one of the following methods:

Option 1: Loosely assemble the plate to the uprights, place the assembly onto the floor anchors, then tighten to the floor.

Option 2: Anchor the carrier legs to the floor, then slide the plate behind the wall and onto the uprights (leave anchors slightly loose to ease placement).

Tip: If the finished floor is not yet installed, add the floor thickness to vertical dimensions.

Set plate height

- Using the mounting dimensions page and submittal drawing, mark on the uprights where the top of the plate should be for the desired lavatory deck height.
- Slide the plate to this height, tighten U-bolts, and check for level.
- Confirm that the holes for the threaded carrier mounting rods align with the lavatory installation guide.
Note: the carrier plate is factory marked to indicate lavatory models.
- Ensure plate is fully tightened and level.

⚠ IMPORTANT The next three steps are critical for proper support.

Install bearing surface plates

- Refer to the mounting dimensions and insert the bearing surface plates into the correct hole for the lavatory model.
- Adjust depth so the plate is flush with the front of the studs.
- Secure with nuts on both sides.

Installation

Install threaded carrier mounting rods

- H**
- Insert rods into the corresponding hole for the lavatory model.
 - Secure with nuts on both sides, leaving a few threads exposed behind the plate.

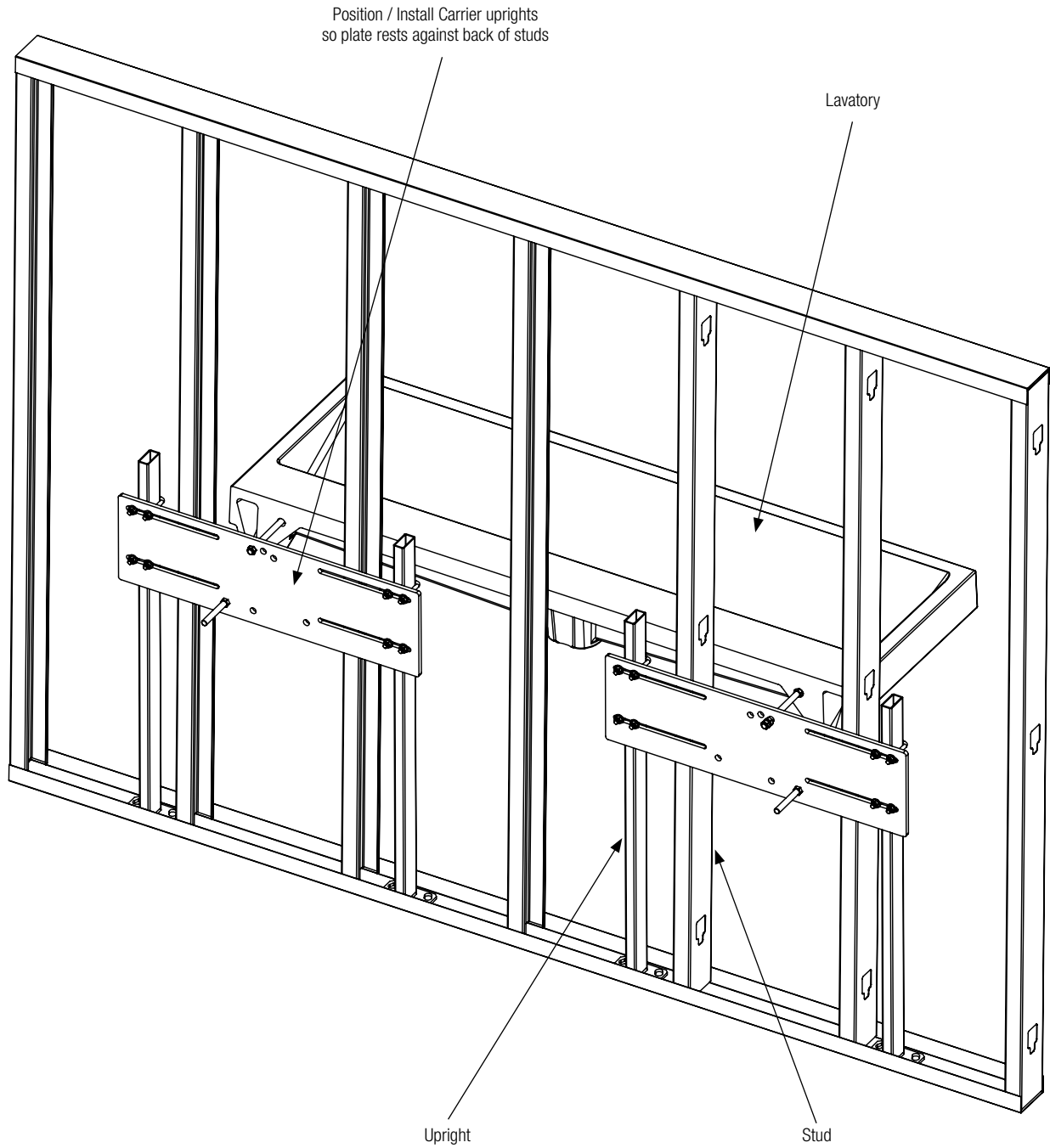
I **Set backup nut and washer.** From the front of the carrier, thread the backup nut and washer onto each rod. Position the washer so it is flush with the front of the studs and backed up by the nut.

Prepare for lavatory installation.

- J**
- Thread the nut and washer for lavatory mounting loosely onto the ends of the carrier rods for safekeeping and future installation of lavatory deck. These can be removed and reinstalled after the wall is finished.
 - The finished wall will be backed by the bearing surface plates and washers, with threaded rods extending through in the correct locations.
 - For lavatory installation, follow the instructions in the lavatory installation guide supplied with the lavatory package.

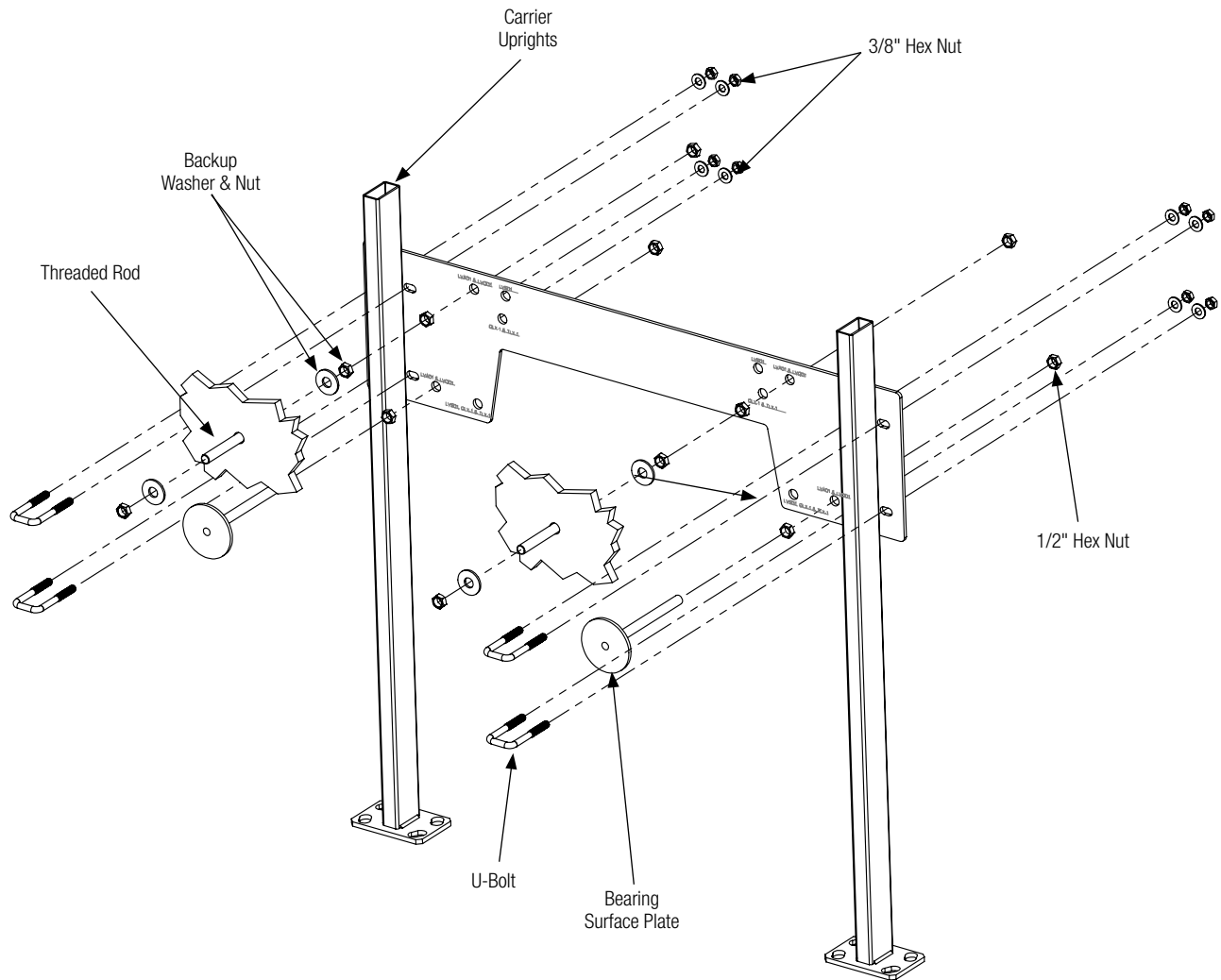
Installation

Example installation of double station lavatory carrier, looking from the rear of wall.



Installation

Exploded view of half of single station lavatory, looking from the front of the carrier.



Mounting Dimensions 1-Station Lavatory

Recommend feet be secured to floor with 1/2" bolts and anchors by others. Not all hardware is shown.



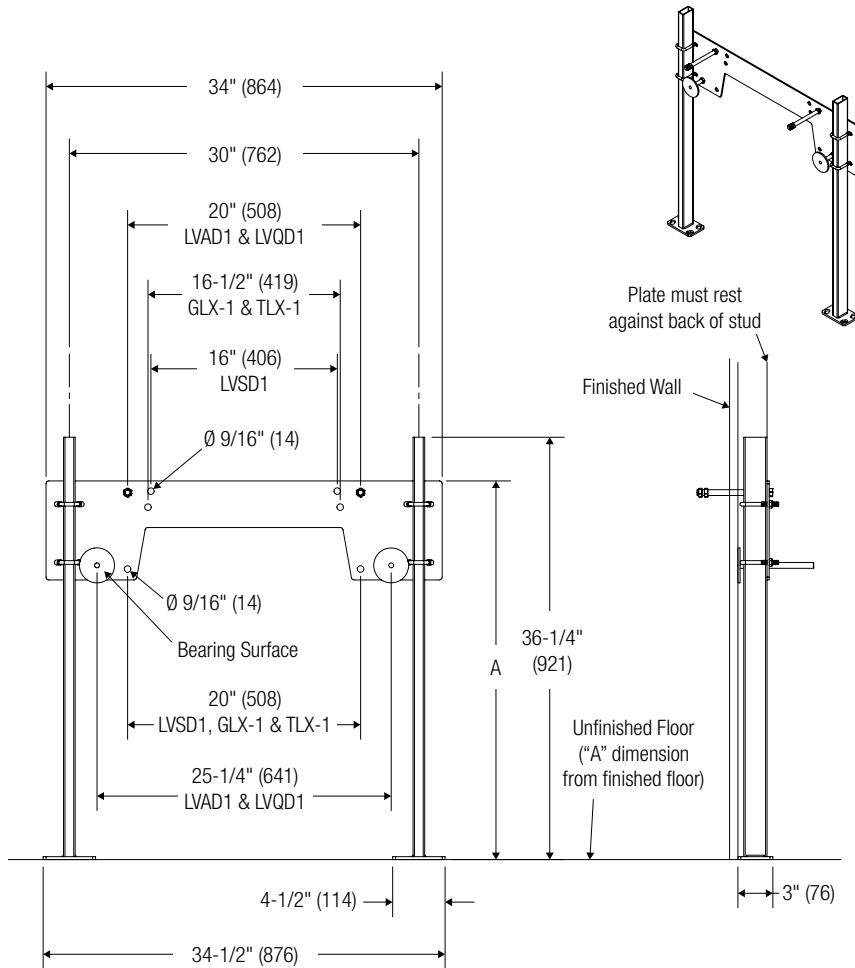
Dimensions set rim height for all models at 33-1/2"



2" required between edge of deck to wall(s)
 5" required between single station decks for side-by-side installations
 11" required between single station and 2,3 or 4 station decks for side-by-side installations



Recommend feet be secured to floor with 1/2" bolts and anchors by others.



Fixture	"A" Finished Floor Dimension
LVAD1, LVQD1, LVSD1	32-1/2"
GLX-1, TLX-1	33-1/2"

Mounting Dimensions 2-Station Lavatory

Recommend feet be secured to floor with 1/2" bolts and anchors by others. Not all hardware is shown.



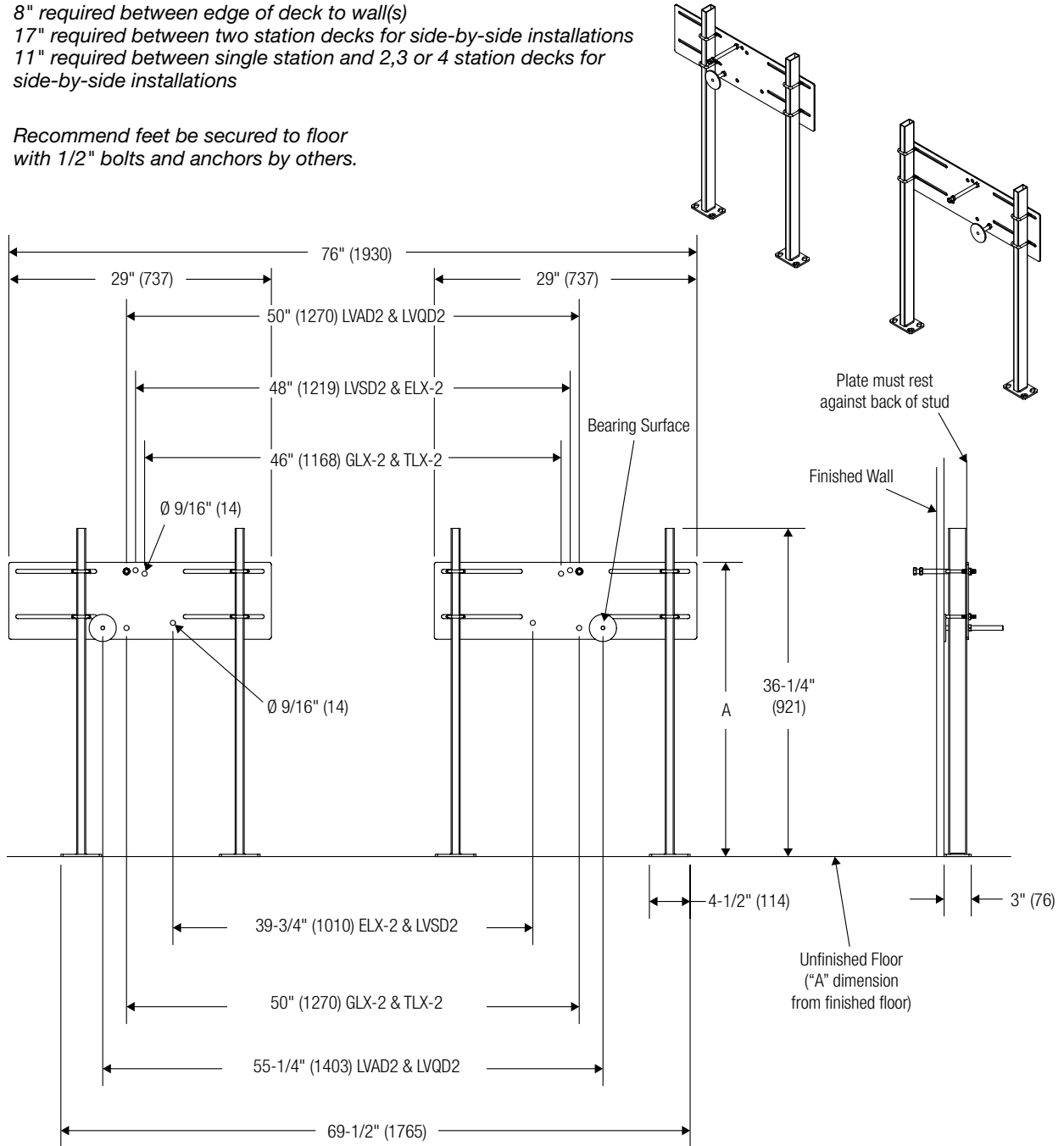
Dimensions set rim height for all models at 33-1/2"



8" required between edge of deck to wall(s)
 17" required between two station decks for side-by-side installations
 11" required between single station and 2,3 or 4 station decks for side-by-side installations



Recommend feet be secured to floor with 1/2" bolts and anchors by others.



Fixture	"A" Finished Floor Dimension
LVAD2, LVQD2, LVSD2	32-1/2"
ELX-2	32-7/8"
GLX-2, TLX-2	32-1/2"

Mounting Dimensions 3-Station Lavatory

Recommend feet be secured to floor with 1/2" bolts and anchors by others. Not all hardware is shown.



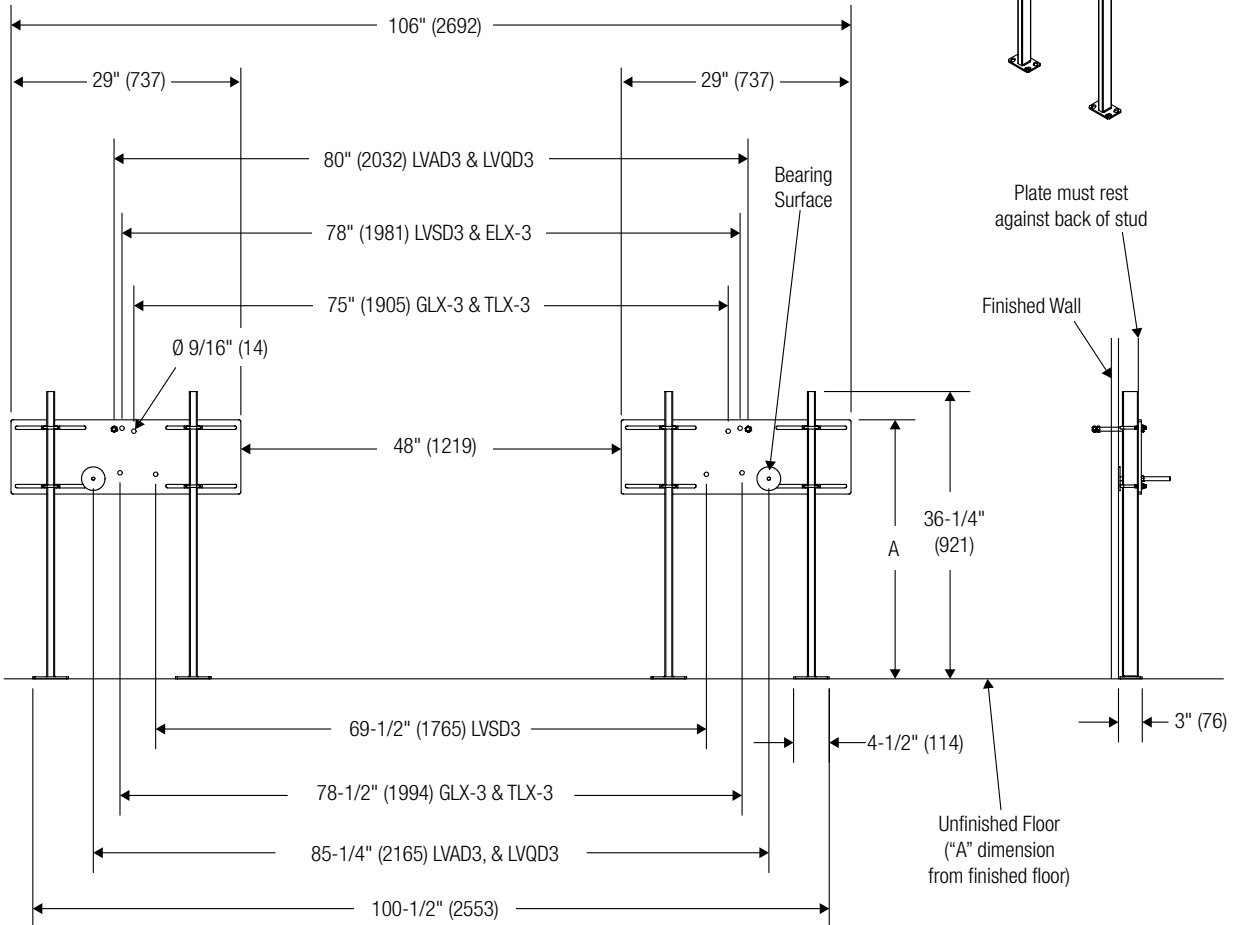
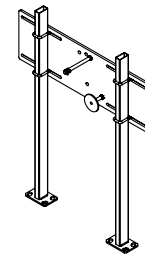
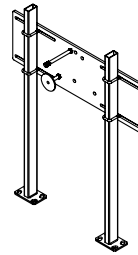
Dimensions set rim height for all models at 33-1/2"



8" required between edge of deck to wall(s)
 17" required between three station decks for side-by-side installations
 11" required between single station and 2,3 or 4 station decks for side-by-side installations



Recommend feet be secured to floor with 1/2" bolts and anchors by others.



Fixture	"A" Finished Floor Dimension
LVAD3, LVQD3, LVSD3	32-11/16"
ELX-3	33-1/16"
GLX-3, TLX-3	32-11/16"

Mounting Dimensions 4-Station Lavatory

Recommend feet be secured to floor with 1/2" bolts and anchors by others. Not all hardware is shown.



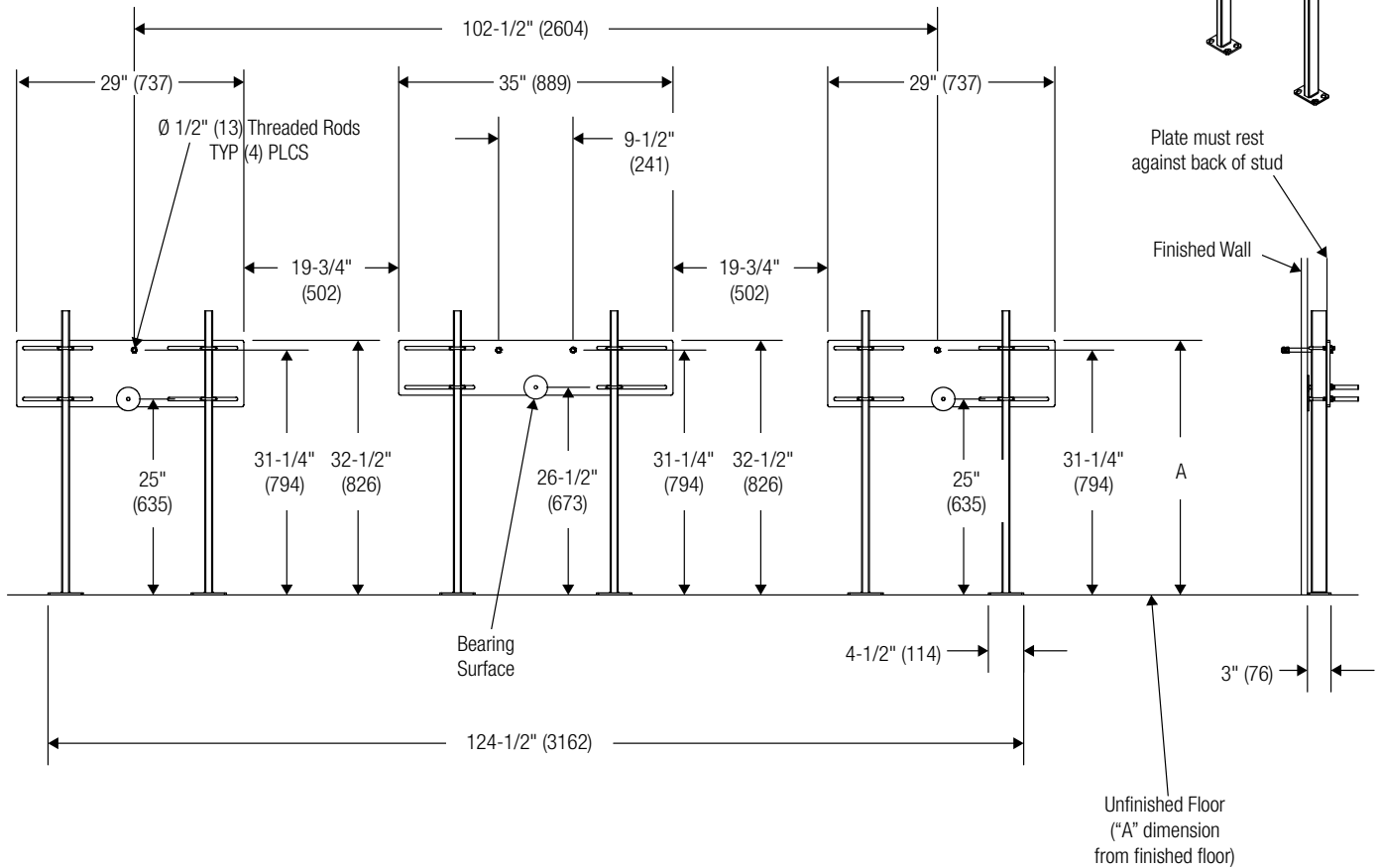
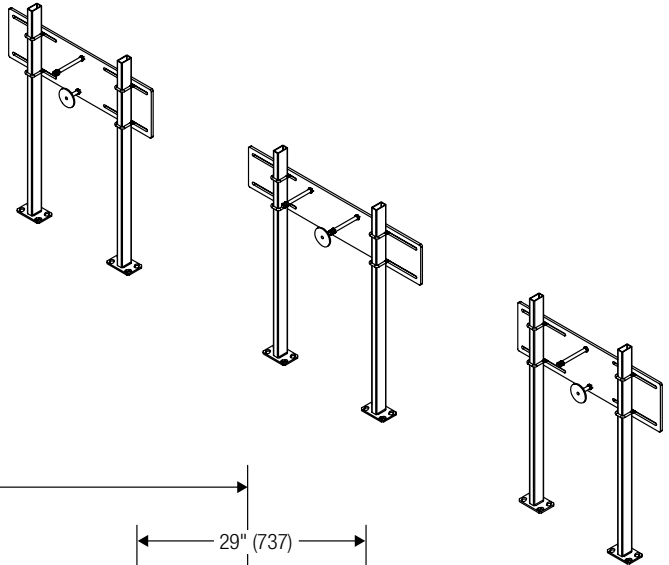
Dimensions set rim height for all models at 33-1/2"



8" required between edge of deck to wall(s)
 17" required between four station decks for side-by-side installations
 11" required between single station and 2,3
 or 4 station decks for side-by-side installations



Recommend feet be secured to floor with 1/2" bolts and anchors by others.



Fixture	"A" Finished Floor Dimension
TLX-4	32-1/2"