



S17-391, S17-392, S17-393, S17-394 In-Wall Carriers for Verge and Express Lavatory Systems

Key Features

- In-wall carrier with hanger plate, adjustable supporting rods, structural upright with welded feet, and hardware
- No backing specification required, providing peace of mind for the installer and owner
- Adjustable supporting rods to accommodate varying wall construction
- Universal style design compatible with select Verge® and Express® lavatory models and compliant to IAPMO Z124

Specifications

The in-wall carrier is engineered to support wall-mounted lavatory system sinks and is compatible with standard construction framing. It includes laser engraved pre-punched mounting holes for ease of installation and alignment with threaded rods that secure the sink to the carrier through the wall. The system is designed for concealed installation and provides a rigid structural support solution that meets typical commercial and institutional load requirements.

Carrier Kit Components

Single station kit includes:

- 1 hanger plate, two structural uprights, hardware

Two station kit includes:

- 2 hanger plates, four structural uprights (two per plate), hardware

Three station kit includes:

- 2 hanger plates, four structural uprights (two per plate), hardware

Four station kit includes:

- 3 hanger plates, six structural uprights (two per plate), hardware



Floor anchors not included in kits

Mounting

Designed for straightforward installation and secure support of select Verge and Express lavatory system sinks. Mounts directly to the lavatory bowl via threaded rods that protrude from the front face of the wall. Threaded rod connections align with integral attachment points on the underside of the bowl, ensuring a stable and level installation. No additional brackets or field modifications are required.

Product Materials

The in-wall carrier features support plates made from standard carbon steel with a durable black powder-coated finish. All mounting hardware is zinc-plated.

Compatible with select Verge® and Express® Lavatory Systems

- [Verge LVQ](#)
- [Verge LVA](#)
- [Verge LVS](#)
- [Express TLX](#)
- [Express ELX](#)
- [Express GLX](#)



S19-371 (1-station Carrier) Shown

Product Compliance

Listed by IAPMO R&T to

- Uniform Plumbing Code (UPC)
- International Plumbing Code (IPC)
- ASME A112.6.1M
- IAPMO File #1146 (Josam)



Consult local and national accessibility codes for proper installation guidelines. Conformity and compliance to local national codes is the responsibility of the installer.

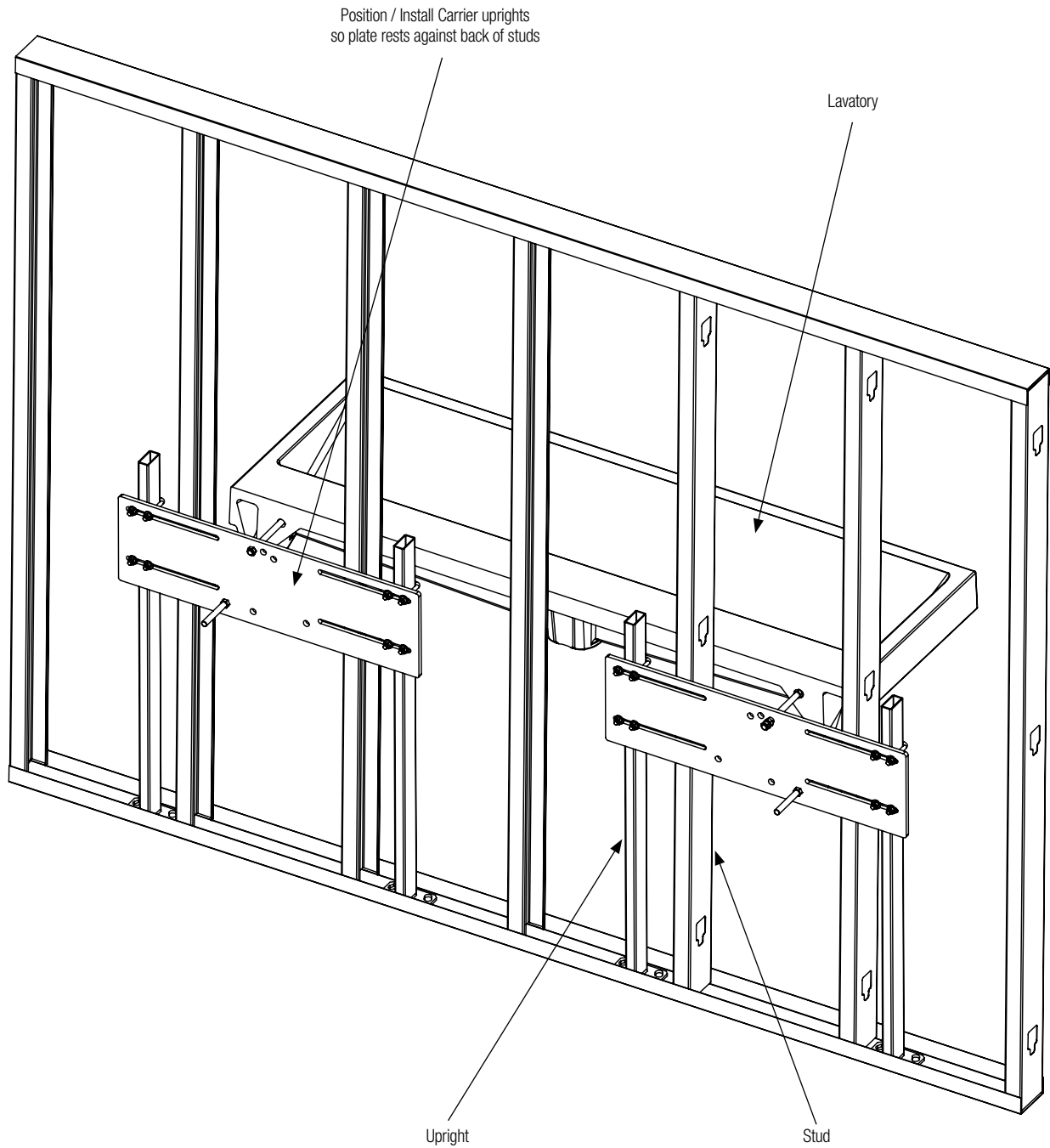
Models (Must select one)

Model	Description
S17-391	In wall plate style carrier for single station LVAD1, LVQD1, LVSD1, GLX-1, TLX-1
S17-392	In wall plate style carrier for two station LVAD2, LVQD2, LVSD2, GLX-2, TLX-2, ELX-2
S17-393	In wall plate style carrier for three station LVAD3, LVQD3, LVSD3, GLX-3, TLX-3, ELX-3
S17-394	In wall plate style carrier for four station TLX-4



S17-391, S17-392, S17-393, S17-394 In-Wall Carriers for Verge and Express Lavatory Systems

Example installation of double station lavatory carrier, looking from the rear of wall.





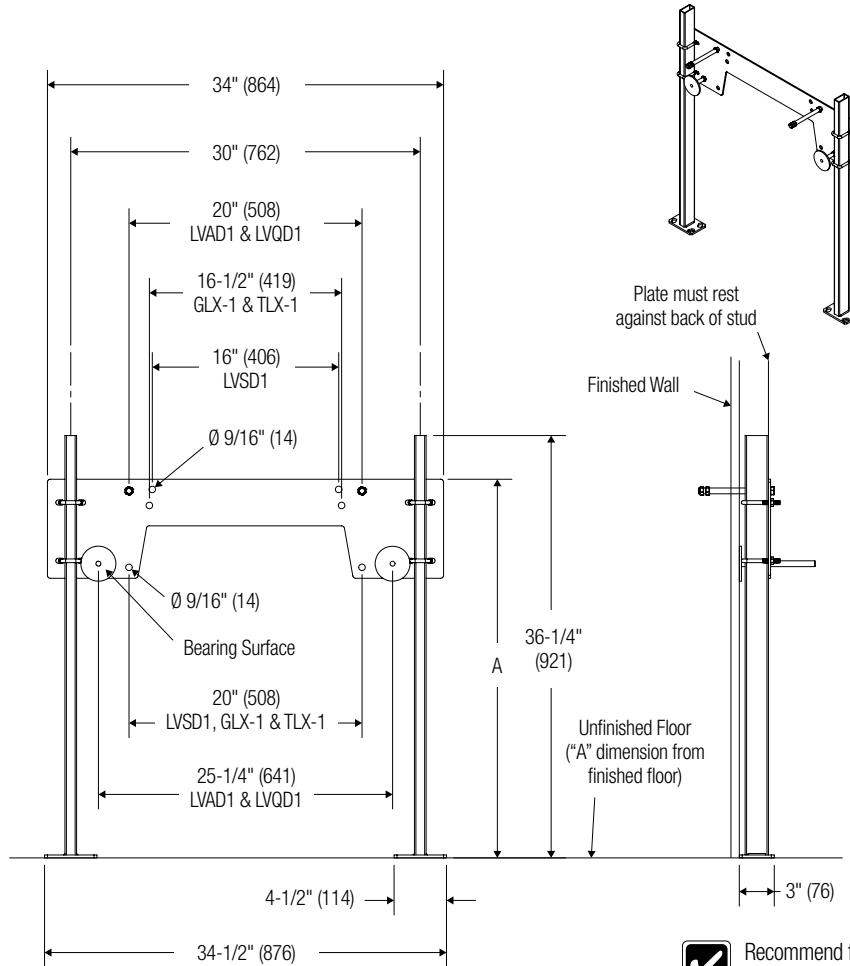
S17-391, S17-392, S17-393, S17-394 In-Wall Carriers for Verge and Express Lavatory Systems

Dimensions – S17-391 (1-Station Lavatory)

(mm)

- 2" required between edge of deck to wall(s)
- 5" required between single station decks for side-by-side installations
- 11" required between single station and 2,3 or 4 station decks for side-by-side installations

Fixture	"A" Finished Floor Dimension
LVAD1, LVQD1, LVSD1	32-1/2"
GLX-1, TLX-1	33-1/2"



- Recommend feet be secured to floor with 1/2" bolts and anchors by others.



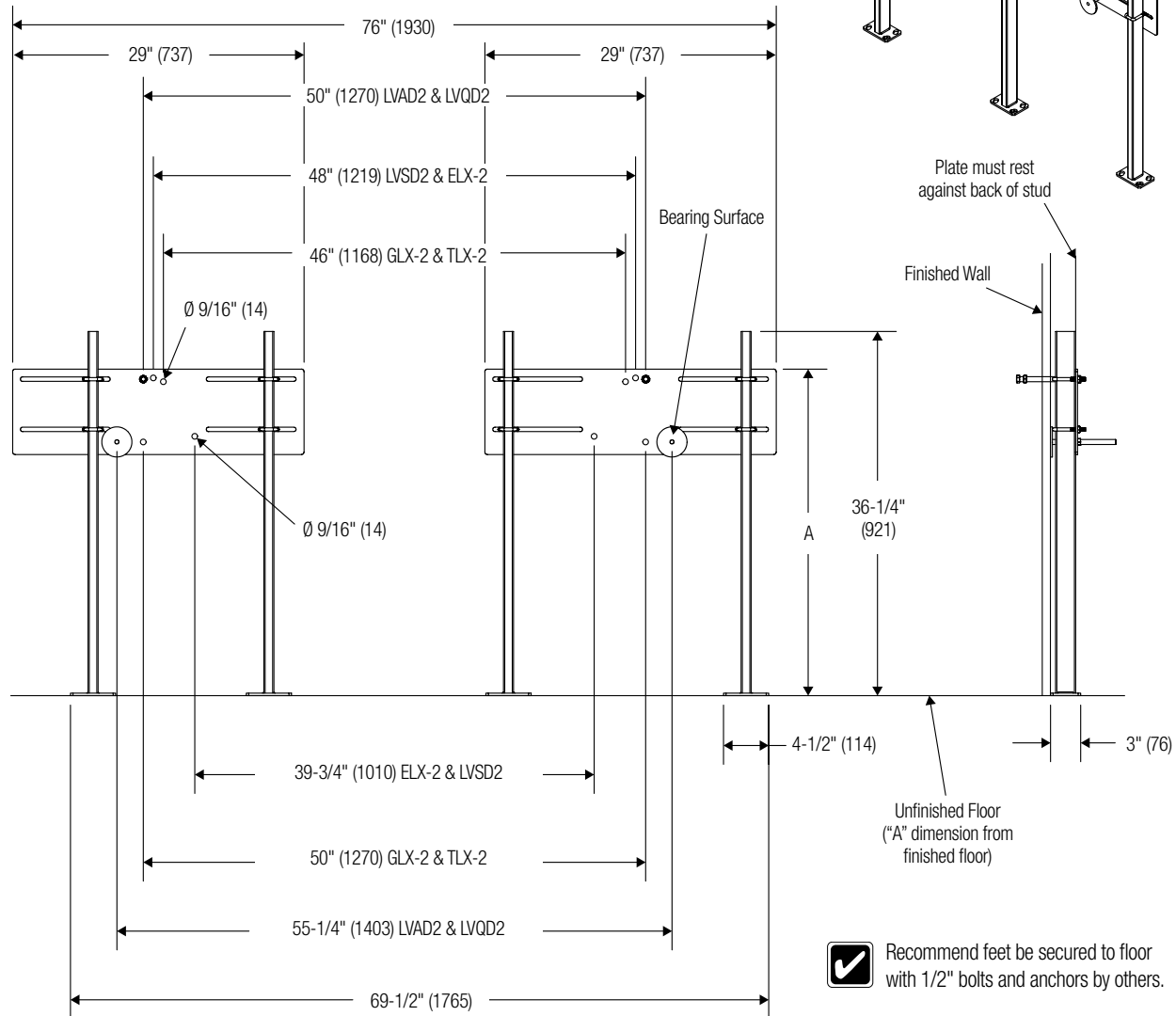
S17-391, S17-392, S17-393, S17-394 In-Wall Carriers for Verge and Express Lavatory Systems

Dimensions – S17-392 (2-Station Lavatory)

(mm)

- 8" required between edge of deck to wall(s)
- 17" required between two station decks for side-by-side installations
- 11" required between single station and 2,3 or 4 station decks for side-by-side installations

Fixture	"A" Finished Floor Dimension
LVAD2, LVQD2, LVSD2	32-1/2"
ELX-2	32-7/8"
GLX-2, TLX-2	32-1/2"





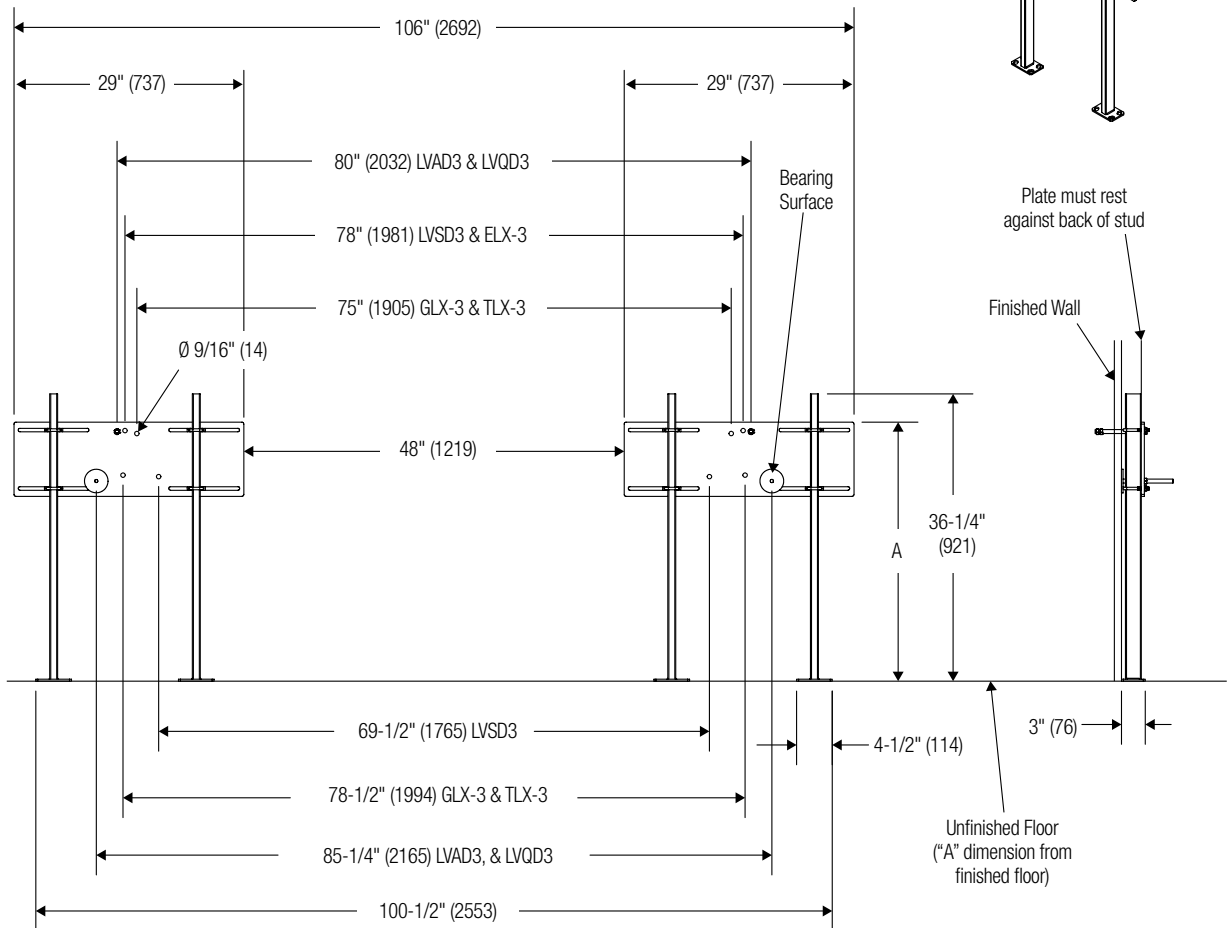
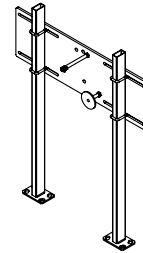
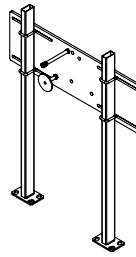
S17-391, S17-392, S17-393, S17-394 In-Wall Carriers for Verge and Express Lavatory Systems

Dimensions – S17-393 (3-Station Lavatory)

(mm)

- 8" required between edge of deck to wall(s)
- 17" required between three station decks for side-by-side installations
- 11" required between single station and 2,3 or 4 station decks for side-by-side installations

Fixture	"A" Finished Floor Dimension
LVAD3, LVQD3, LVSD3	32-11/16"
ELX-3	33-1/16"
GLX-3, TLX-3	32-11/16"



- Recommend feet be secured to floor with 1/2" bolts and anchors by others.

